

CITED2 Antibody

Catalog No: #46505

Orders: order@signalwayantibody.comSupport: tech@signalwayantibody.com

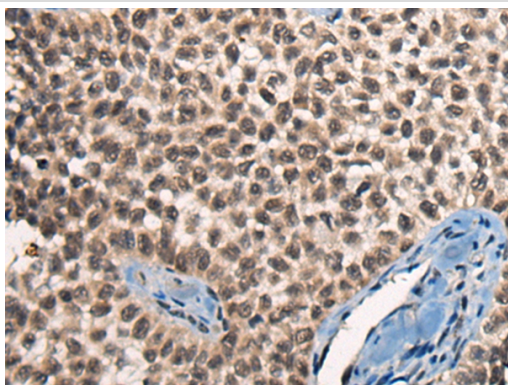
Description

| | |
|-----------------------|---|
| Product Name | CITED2 Antibody |
| Host Species | Rabbit |
| Clonality | Polyclonal |
| Purification | Antigen affinity purification |
| Applications | IHC |
| Species Reactivity | Hu Ms |
| Specificity | The antibody detects endogenous levels of total CITED2 protein. |
| Immunogen Type | peptide |
| Immunogen Description | Synthetic peptide corresponding to residues near the N terminal of human CITED2 |
| Target Name | CITED2 |
| Other Names | ASD8; MRG1; VSD2; MRG-1; P35SRJ |
| Accession No. | Swiss-Prot:Q99967 NCBI Gene ID:10370NCBI Protein:NP_006070 |
| Uniprot | Q99967 |
| GeneID | 10370; |
| Concentration | 1.9mg/ml |
| Formulation | Rabbit IgG in pH7.4 PBS, 0.05% NaN ₃ , 40% Glycerol. |
| Storage | Store at -20°C |

Application Details

Immunohistochemistry: 1: 40-200

Images



The image on the left is immunohistochemistry of paraffin-embedded Human ovarian cancer tissue using 46505(CITED2 Antibody) at dilution 1/50, on the right is treated with synthetic peptide. (Original magnification: x200)

Background

The protein encoded by this gene inhibits transactivation of HIF1A-induced genes by competing with binding of hypoxia-inducible factor 1-alpha to p300-CH1. Mutations in this gene are a cause of cardiac septal defects. Alternatively spliced transcript variants encoding multiple isoforms have been observed for this gene.

Note: This product is for in vitro research use only