

## CLIC6 Antibody

Catalog No: #46513

Orders: [order@signalwayantibody.com](mailto:order@signalwayantibody.com)Support: [tech@signalwayantibody.com](mailto:tech@signalwayantibody.com)

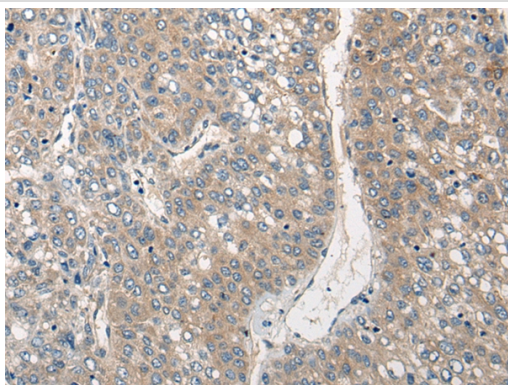
## Description

Product Name	CLIC6 Antibody
Host Species	Rabbit
Clonality	Polyclonal
Purification	Antigen affinity purification
Applications	IHC
Species Reactivity	Hu
Specificity	The antibody detects endogenous levels of total CLIC6 protein.
Immunogen Type	peptide
Immunogen Description	Synthetic peptide corresponding to residues near the C terminal of human CLIC6
Target Name	CLIC6
Other Names	CLIC1L
Accession No.	Swiss-Prot:Q96NY7 NCBI Gene ID:54102NCBI Protein:XP_011527952
Uniprot	Q96NY7
GeneID	54102;
Concentration	1.6mg/ml
Formulation	Rabbit IgG in pH7.4 PBS, 0.05% NaN <sub>3</sub> , 40% Glycerol.
Storage	Store at -20°C

## Application Details

Immunohistochemistry: 1: 30-150

## Images



The image on the left is immunohistochemistry of paraffin-embedded Human liver cancer tissue using 46513(CLIC6 Antibody) at dilution 1/40, on the right is treated with synthetic peptide. (Original magnification: x200)

## Background

This gene encodes a member of the chloride intracellular channel family of proteins. The gene is part of a large triplicated region found on chromosomes 1, 6, and 21. Alternative splicing results in multiple transcript variants encoding different isoforms.?

---

Note: This product is for in vitro research use only