

SULT1E1 Rabbit Polyclonal Antibody

Catalog No: #29221



Package Size: #29221-1 50ul #29221-2 100ul

Orders: order@signalwayantibody.com
Support: tech@signalwayantibody.com

Description

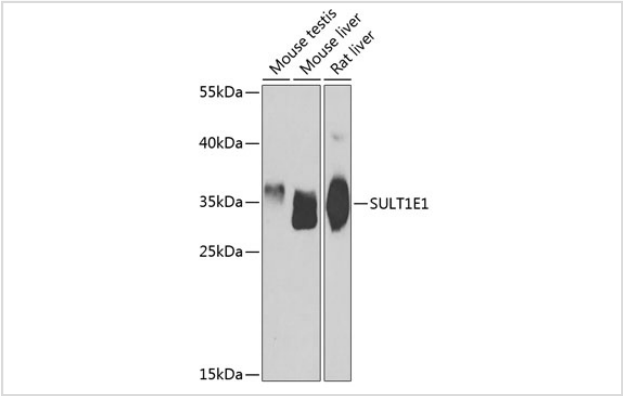
Product Name	SULT1E1 Rabbit Polyclonal Antibody
Host Species	Rabbit
Clonality	Polyclonal
Isotype	IgG
Purification	Affinity purification
Applications	WB,IF
Species Reactivity	Human,Mouse,Rat
Immunogen Description	Recombinant fusion protein of human SULT1E1 (NP_005411.1).
Other Names	SULT1E1;EST;EST-1;ST1E1;STE
Accession No.	Swiss-Prot#:P49888NCBI Gene ID:6783
Uniprot	P49888
GeneID	6783;
Calculated MW	35kDa
Formulation	PBS with 0.02% sodium azide,50% glycerol,pH7.3.
Storage	Store at -20°C. Avoid freeze / thaw cycles.

Application Details

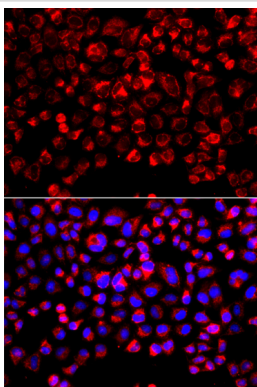
WB 1:500 - 1:2000

IF 1:50 - 1:200

Images



Western blot analysis of extracts of various cell lines, using SULT1E1 antibody at 1:1000 dilution.



Immunofluorescence analysis of A549 cells using SULT1E1 antibody. Blue: DAPI for nuclear staining.

Background

Sulfotransferase enzymes catalyze the sulfate conjugation of many hormones, neurotransmitters, drugs, and xenobiotic compounds. These cytosolic enzymes are different in their tissue distributions and substrate specificities. The gene structure (number and length of exons) is similar among family members. This gene encodes a protein that transfers a sulfo moiety to and from estrone, which may control levels of estrogen receptors.

Note: This product is for in vitro research use only