

Kappa Light chain Antibody

Catalog No: #46588

Orders: order@signalwayantibody.comSupport: tech@signalwayantibody.com

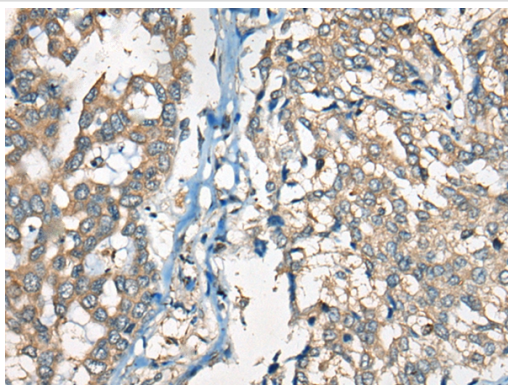
Description

Product Name	Kappa Light chain Antibody
Host Species	Rabbit
Clonality	Polyclonal
Purification	Antigen affinity purification
Applications	IHC
Species Reactivity	Hu
Specificity	The antibody detects endogenous levels of total Kappa Light chain protein.
Immunogen Type	peptide
Immunogen Description	Synthetic peptide corresponding to internal residues of human Kappa Light chain
Target Name	Kappa Light chain
Accession No.	Swiss-Prot:P01608NCBI Gene ID:28896NCBI Protein:
Uniprot	P01608
GeneID	28896;
Concentration	0.9mg/ml
Formulation	Rabbit IgG in pH7.4 PBS, 0.05% NaN ₃ , 40% Glycerol.
Storage	Store at -20°C

Application Details

Immunohistochemistry: 1: 20-100

Images



The image on the left is immunohistochemistry of paraffin-embedded Human liver cancer tissue using 46588(Kappa Light chain Antibody) at dilution 1/25, on the right is treated with synthetic peptide. (Original magnification: x200)

Background

Immunoglobulins belong to a group of related glyco proteins which make up 20% of serum proteins. Antigens and immunoglobulins react to confer immunity to individuals. Immunoglobulins have similar structures of two identical heavy chains and two identical light chains. Both the heavy chains and the light chains are divided into constant and variable regions. The constant regions have the same amino acid sequences between all the immunoglobulin classes. The variable regions have approximately 110 amino acids with high sequence variability. The amino acid sequence of the heavy chain determines the class of an immunoglobulin. The five types of immunoglobulin heavy chains are known as: IgG, IgA, IgM, IgD, and IgE.

IgG is divided into four subclasses, and IgA is divided into two subclasses. In serum IgA and IgG are monomers with a single 4 polypeptide unit; while, IgM is a pentamer. IgA may also form polymers. Kappa light chain antibody can be used for the identification of leukemias, plasmacytomas and certain non Hodgkin's lymphomas. Kappa light chain contains one immunoglobulin like domain. The EU sequence has the INV allotypic marker, Ala 45 and Val 83. The ROY sequence has the INV allotypic marker, Ala 45 and Leu 83.

Note: This product is for in vitro research use only