

KDF1 Antibody

Catalog No: #46589

Orders: order@signalwayantibody.comSupport: tech@signalwayantibody.com

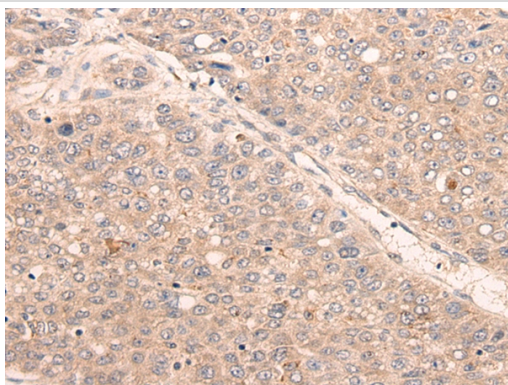
Description

Product Name	KDF1 Antibody
Host Species	Rabbit
Clonality	Polyclonal
Purification	Antigen affinity purification
Applications	IHC
Species Reactivity	Hu Ms Rt
Specificity	The antibody detects endogenous levels of total KDF1 protein.
Immunogen Type	peptide
Immunogen Description	Synthetic peptide corresponding to residues near the C terminal of human KDF1
Target Name	KDF1
Other Names	C1orf172
Accession No.	Swiss-Prot:Q8NAX2 NCBI Gene ID:126695NCBI Protein:NP_689578
Uniprot	Q8NAX2
GeneID	126695;
Concentration	0.6mg/ml
Formulation	Rabbit IgG in pH7.4 PBS, 0.05% NaN ₃ , 40% Glycerol.
Storage	Store at -20°C

Application Details

Immunohistochemistry: 1: 25-100

Images



The image on the left is immunohistochemistry of paraffin-embedded Human liver cancer tissue using 46589(KDF1 Antibody) at dilution 1/25, on the right is treated with synthetic peptide. (Original magnification: x200)

Background

Plays a role in the regulation of the epidermis formation during early development. Required both as an inhibitor of basal cell proliferation and a promoter of differentiation of basal progenitor cell progeny (By similarity).

Note: This product is for in vitro research use only