

KLHL12 Antibody

Catalog No: #46592

Orders: order@signalwayantibody.comSupport: tech@signalwayantibody.com

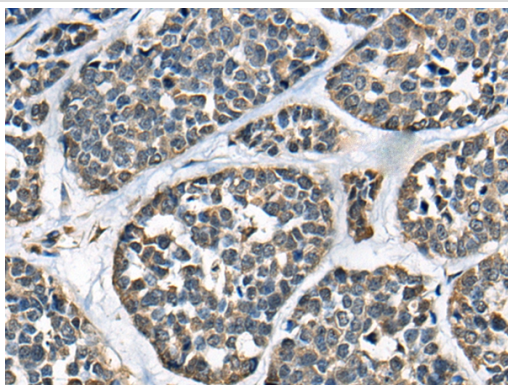
Description

Product Name	KLHL12 Antibody
Host Species	Rabbit
Clonality	Polyclonal
Purification	Antigen affinity purification
Applications	IHC
Species Reactivity	Hu
Specificity	The antibody detects endogenous levels of total KLHL12 protein.
Immunogen Type	peptide
Immunogen Description	Synthetic protein corresponding to residues near the C terminal of human KLHL12
Target Name	KLHL12
Other Names	DKIR; C3IP1
Accession No.	Swiss-Prot:Q53G59NCBI Gene ID:59349NCBI Protein:BC003183
Uniprot	Q53G59
GeneID	59349;
Concentration	0.9mg/ml
Formulation	Rabbit IgG in pH7.4 PBS, 0.05% NaN ₃ , 40% Glycerol.
Storage	Store at -20°C

Application Details

Immunohistochemistry: 1: 20-100

Images



The image on the left is immunohistochemistry of paraffin-embedded Human esophagus cancer tissue using 46592(KLHL12 Antibody) at dilution 1/35, on the right is treated with fusion protein. (Original magnification: x200)

Background

This gene encodes a member of the KLHL (Kelch-like) family of proteins. This protein has been identified as an autoantigen in the autoimmune disease Sjogren's syndrome and as a potential biomarker in primary biliary cirrhosis. This protein may act as a substrate adaptor of the Cullin-3 ubiquitin ligase complex to promote substrate-specific ubiquitylation. Ubiquitylation by this complex has been shown to regulate the Wnt signaling pathway as well as COPII vesicle coat size. A pseudogene has been identified on chromosome 22. Alternative splicing results in multiple transcript

variants.

Note: This product is for in vitro research use only