

MAPK4 Antibody

Catalog No: #46605



Orders: order@signalwayantibody.com
Support: tech@signalwayantibody.com

Description

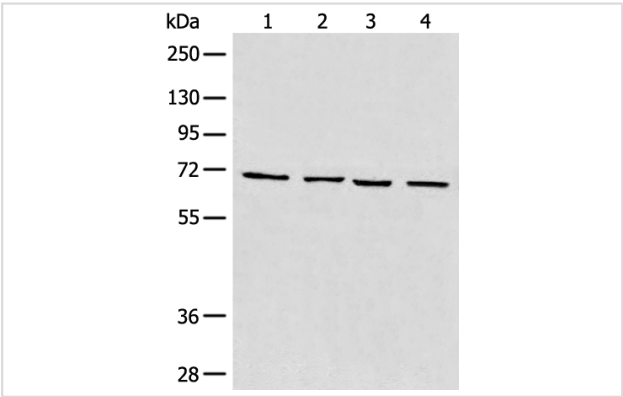
Product Name	MAPK4 Antibody
Host Species	Rabbit
Clonality	Polyclonal
Purification	Antigen affinity purification
Applications	WB IHC
Species Reactivity	Hu Ms
Specificity	The antibody detects endogenous levels of total MAPK4 protein.
Immunogen Type	peptide
Immunogen Description	Synthetic peptide corresponding to residues near the C terminal of human MAPK4
Target Name	MAPK4
Other Names	ERK4; ERK-4; PRKM4; p63MAPK; p63-MAPK
Accession No.	Swiss-Prot:P31152NCBI Gene ID:5596NCBI Protein:NP_002738
Uniprot	P31152
GeneID	5596;
Calculated MW	66 kDa
Concentration	1.3mg/ml
Formulation	Rabbit IgG in pH7.4 PBS, 0.05% NaN3, 40% Glycerol.
Storage	Store at -20°C

Application Details

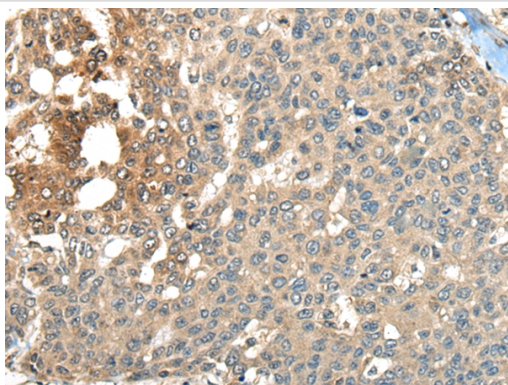
Western blotting: 1:500-1:2000

Immunohistochemistry: 1: 30-150

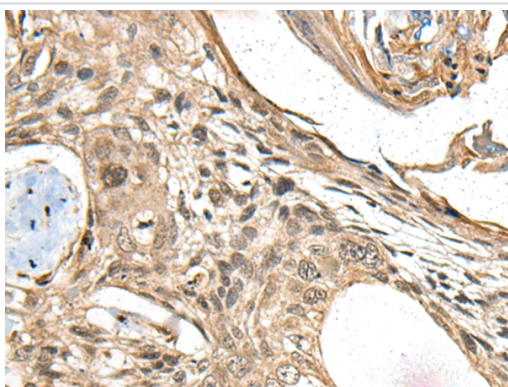
Images



Gel: 8%SDS-PAGE
lysate: 40 B|Γ g, Lane 1-4: 293T cellB£B¬Human heart
tissueB£B¬Raji and LNCAP cell lysates,
Primary antibody: 46605B£B¬MAPK4 Antibody) at dilution
1/550
Secondary antibody: Goat anti rabbit IgG at 1/8000 dilution,
Exposure time: 30 seconds



The image on the left is immunohistochemistry of paraffin-embedded Human liver cancer tissue using 46605(MAPK4 Antibody) at dilution 1/35, on the right is treated with synthetic peptide. (Original magnification: x200)



The image on the left is immunohistochemistry of paraffin-embedded Human esophagus cancer tissue using 46605(MAPK4 Antibody) at dilution 1/35, on the right is treated with synthetic peptide. (Original magnification: x200)

Background

Mitogen-activated protein kinase 4 is a member of the mitogen-activated protein kinase family. Tyrosine kinase growth factor receptors activate mitogen-activated protein kinases which then translocate into the nucleus and phosphorylate nuclear targets. Alternative splicing results in multiple transcript variants.

Note: This product is for in vitro research use only