

MTNR1B Antibody

Catalog No: #46617

Orders: order@signalwayantibody.comSupport: tech@signalwayantibody.com

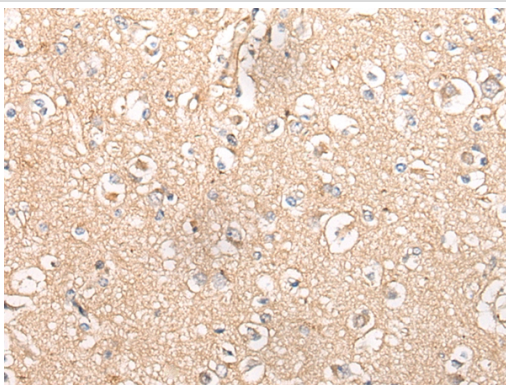
Description

Product Name	MTNR1B Antibody
Host Species	Rabbit
Clonality	Polyclonal
Purification	Antigen affinity purification
Applications	IHC
Species Reactivity	Hu
Specificity	The antibody detects endogenous levels of total MTNR1B protein.
Immunogen Type	peptide
Immunogen Description	Synthetic peptide corresponding to residues near the C terminal of human MTNR1B
Target Name	MTNR1B
Other Names	MT2; FGQTL2; MEL-1B-R
Accession No.	Swiss-Prot:P49286NCBI Gene ID:4544NCBI Protein:NP_005950
Uniprot	P49286
GeneID	4544;
Concentration	1.4mg/ml
Formulation	Rabbit IgG in pH7.4 PBS, 0.05% NaN ₃ , 40% Glycerol.
Storage	Store at -20°C

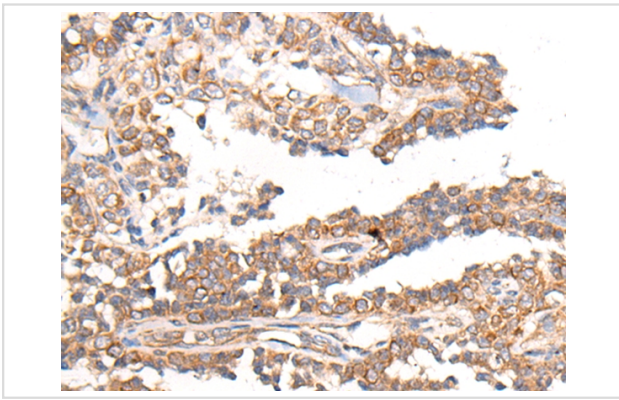
Application Details

Immunohistochemistry: 1: 30-150

Images



The image on the left is immunohistochemistry of paraffin-embedded Human brain tissue using 46617(MTNR1B Antibody) at dilution 1/55, on the right is treated with synthetic peptide. (Original magnification: x200)



The image on the left is immunohistochemistry of paraffin-embedded Human ovarian cancer tissue using 46617(MTNR1B Antibody) at dilution 1/55, on the right is treated with synthetic peptide. (Original magnification: x200)

Background

This gene encodes one of two high affinity forms of a receptor for melatonin, the primary hormone secreted by the pineal gland. This gene product is an integral membrane protein that is a G-protein coupled, 7-transmembrane receptor. It is found primarily in the retina and brain although this detection requires RT-PCR. It is thought to participate in light-dependent functions in the retina and may be involved in the neurobiological effects of melatonin.?

Note: This product is for in vitro research use only