

PMP22 Antibody

Catalog No: #46642



Orders: [order@signalwayantibody.com](mailto:order@signalwayantibody.com)  
Support: [tech@signalwayantibody.com](mailto:tech@signalwayantibody.com)

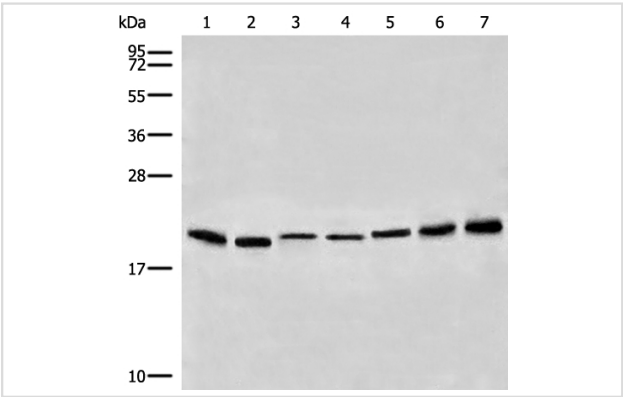
Description

Product Name	PMP22 Antibody
Host Species	Rabbit
Clonality	Polyclonal
Purification	Antigen affinity purification
Applications	WB IHC
Species Reactivity	Hu
Specificity	The antibody detects endogenous levels of total PMP22 protein.
Immunogen Type	peptide
Immunogen Description	Synthetic peptide corresponding to internal residues of human PMP22
Target Name	PMP22
Other Names	DSS; GAS3; HNPP; CMT1A; CMT1E; GAS-3; Sp110; HMSNIA
Accession No.	Swiss-Prot:Q01453 NCBI Gene ID:5376NCBI Protein:NP_000295
Uniprot	Q01453
GeneID	5376;
Calculated MW	18 kDa
Concentration	0.2mg/ml
Formulation	Rabbit IgG in pH7.4 PBS, 0.05% NaN3, 40% Glycerol.
Storage	Store at -20°C

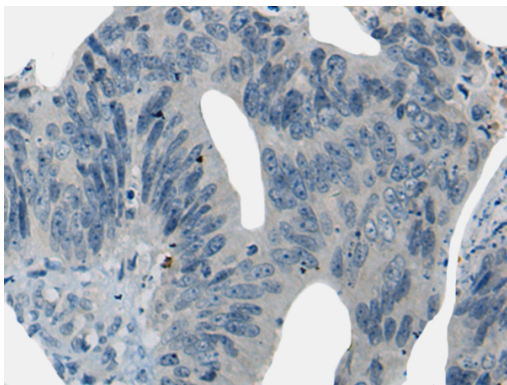
Application Details

Western blotting: 1:200-1:1000  
Immunohistochemistry: 1: 20-100

Images



Gel: 12%SDS-PAGE  
lysate: 40 B $\mu$ g, Lane 1-7: Human cerebrum  
tissueB&B-A172 cellB&B-Mouse lung tissueB&B-293T  
cellB&B-231 cellB&B-Mouse liver tissueB&B-Mouse brain  
tissue lysates,  
Primary antibody: 46642B&B-PMP22 Antibody) at dilution  
1/200  
Secondary antibody: Goat anti rabbit IgG at 1/8000 dilution,  
Exposure time: 10 seconds



The image on the left is immunohistochemistry of paraffin-embedded Human colorectal cancer tissue using 46642(PMP22 Antibody) at dilution 1/20, on the right is treated with synthetic peptide. (Original magnification: x200)

## Background

This gene encodes an integral membrane protein that is a major component of myelin in the peripheral nervous system. Studies suggest two alternately used promoters drive tissue-specific expression. Various mutations of this gene are causes of Charcot-Marie-Tooth disease Type IA, Dejerine-Sottas syndrome, and hereditary neuropathy with liability to pressure palsies. Alternative splicing results in multiple transcript variants.

Note: This product is for in vitro research use only