

RCOR2 Antibody

Catalog No: #46655

Orders: order@signalwayantibody.comSupport: tech@signalwayantibody.com

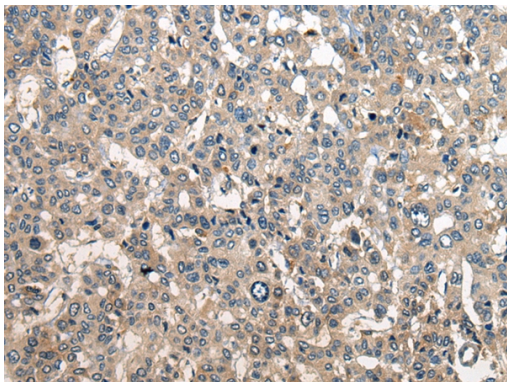
Description

| | |
|-----------------------|---|
| Product Name | RCOR2 Antibody |
| Host Species | Rabbit |
| Clonality | Polyclonal |
| Purification | Antigen affinity purification |
| Applications | IHC |
| Species Reactivity | Hu Ms Rt |
| Specificity | The antibody detects endogenous levels of total RCOR2 protein. |
| Immunogen Type | peptide |
| Immunogen Description | Synthetic peptide corresponding to internal residues of human RCOR2 |
| Target Name | RCOR2 |
| Accession No. | Swiss-Prot:Q8IZ40 NCBI Gene ID:283248NCBI Protein:NP_775858 |
| Uniprot | Q8IZ40 |
| GeneID | 283248; |
| Concentration | 0.9mg/ml |
| Formulation | Rabbit IgG in pH7.4 PBS, 0.05% NaN ₃ , 40% Glycerol. |
| Storage | Store at -20°C |

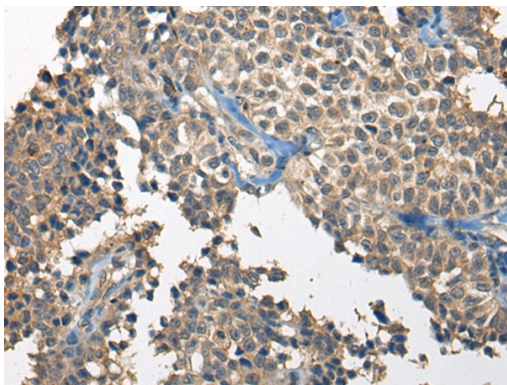
Application Details

Immunohistochemistry: 1: 25-100

Images



The image on the left is immunohistochemistry of paraffin-embedded Human liver cancer tissue using 46655(RCOR2 Antibody) at dilution 1/25, on the right is treated with synthetic peptide. (Original magnification: x200)



The image on the left is immunohistochemistry of paraffin-embedded Human ovarian cancer tissue using 46655(RCOR2 Antibody) at dilution 1/25, on the right is treated with synthetic peptide. (Original magnification: x200)

Background

May act as a component of a corepressor complex that represses transcription.

Note: This product is for in vitro research use only