

## RGN Antibody

Catalog No: #46660

Orders: [order@signalwayantibody.com](mailto:order@signalwayantibody.com)Support: [tech@signalwayantibody.com](mailto:tech@signalwayantibody.com)

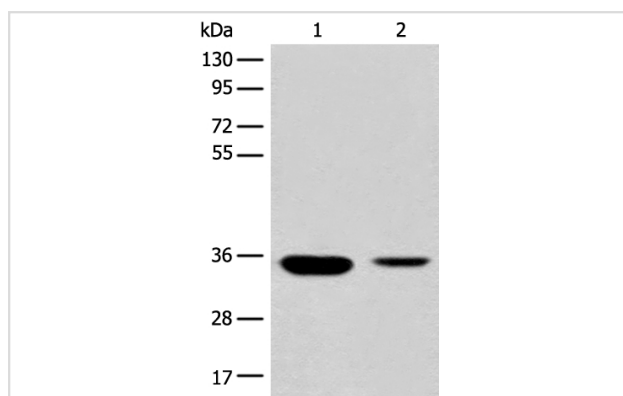
## Description

Product Name	RGN Antibody
Host Species	Rabbit
Clonality	Polyclonal
Purification	Antigen affinity purification
Applications	WB
Species Reactivity	Hu Ms
Specificity	The antibody detects endogenous levels of total RGN protein.
Immunogen Type	peptide
Immunogen Description	Synthetic peptide corresponding to residues near the C terminal of human RGN
Target Name	RGN
Other Names	RC; GNL; SMP30; HEL-S-41
Accession No.	Swiss-Prot:Q15493NCBI Gene ID:9104NCBI Protein:NP_004674
Uniprot	Q15493
GeneID	9104;
Calculated MW	33 kDa
Concentration	1mg/ml
Formulation	Rabbit IgG in pH7.4 PBS, 0.05% NaN <sub>3</sub> , 40% Glycerol.
Storage	Store at -20°C

## Application Details

Western blotting: 1:500-1:2000

## Images



Gel: 8%SDS-PAGE

lysate: 40 B $\mu$ g, Lane 1-2: Mouse liver tissue and Human fetal liver tissue lysates,Primary antibody: 46660B $\times$ B $\times$ RGN Antibody) at dilution 1/500

Secondary antibody: Goat anti rabbit IgG at 1/8000 dilution,

Exposure time: 20 seconds

## Background

The protein encoded by this gene is a highly conserved, calcium-binding protein, that is preferentially expressed in the liver and kidney. It may have an important role in calcium homeostasis. Studies in rat indicate that this protein may also play a role in aging, as it shows age-associated

down-regulation. This gene is part of a gene cluster on chromosome Xp11.3-Xp11.23. Alternative splicing results in multiple transcript variants.

---

Note: This product is for in vitro research use only