

## RNF138 Antibody

Catalog No: #46661

Orders: [order@signalwayantibody.com](mailto:order@signalwayantibody.com)Support: [tech@signalwayantibody.com](mailto:tech@signalwayantibody.com)

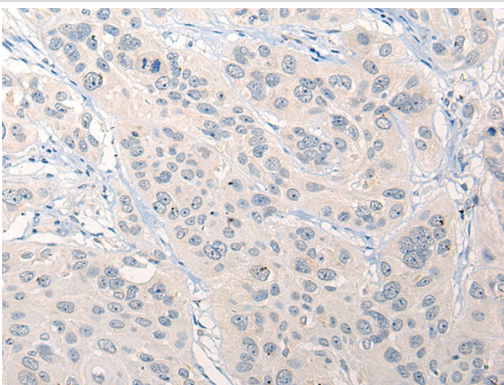
## Description

Product Name	RNF138 Antibody
Host Species	Rabbit
Clonality	Polyclonal
Purification	Antigen affinity purification
Applications	IHC
Species Reactivity	Hu Ms Rt
Specificity	The antibody detects endogenous levels of total RNF138 protein.
Immunogen Type	peptide
Immunogen Description	Synthetic peptide corresponding to internal residues of human RNF138
Target Name	RNF138
Other Names	NARF; HSD-4; STRIN; hNARF
Accession No.	Swiss-Prot:Q8WVD3 NCBI Gene ID:51444NCBI Protein:NP_057355
Uniprot	Q8WVD3
GeneID	51444;
Concentration	0.5mg/ml
Formulation	Rabbit IgG in pH7.4 PBS, 0.05% NaN <sub>3</sub> , 40% Glycerol.
Storage	Store at -20°C

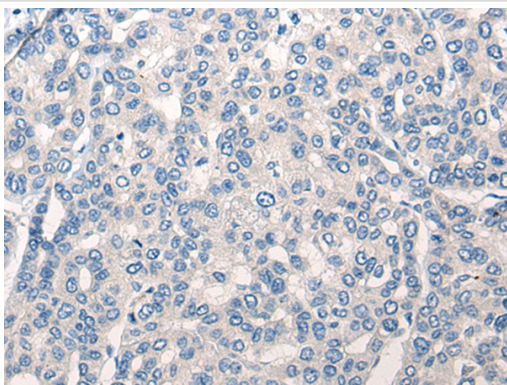
## Application Details

Immunohistochemistry: 1: 10-50

## Images



The image on the left is immunohistochemistry of paraffin-embedded Human esophagus cancer tissue using 46661(RNF138 Antibody) at dilution 1/20, on the right is treated with synthetic peptide. (Original magnification: x200)



The image on the left is immunohistochemistry of paraffin-embedded Human liver cancer tissue using 46661(RNF138 Antibody) at dilution 1/20, on the right is treated with synthetic peptide. (Original magnification: x200)

## Background

The protein encoded by this gene contains a RING finger, a motif present in a variety of functionally distinct proteins and known to be involved in protein-DNA and protein-protein interactions. Alternatively spliced transcript variants encoding distinct isoforms have been observed.?

Note: This product is for in vitro research use only