

## THRA/THRB Antibody

Catalog No: #46684

Orders: [order@signalwayantibody.com](mailto:order@signalwayantibody.com)Support: [tech@signalwayantibody.com](mailto:tech@signalwayantibody.com)

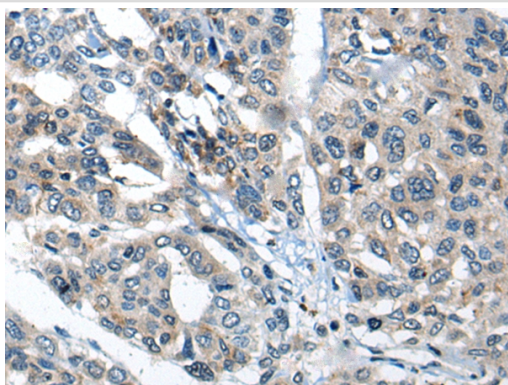
## Description

Product Name	THRA/THRB Antibody
Host Species	Rabbit
Clonality	Polyclonal
Purification	Antigen affinity purification
Applications	IHC
Species Reactivity	Hu Ms Rt
Specificity	The antibody detects endogenous levels of total THRA/THRB protein.
Immunogen Type	peptide
Immunogen Description	Synthetic peptide corresponding to internal residues of human THRA,THRB
Target Name	THRA/THRB
Other Names	AR7; EAR7; ERBA; CHNG6; ERBA1; NR1A1; THRA1; THRA2; ERB-T-1; c-ERBA-1; GRTH; PRTH; THR1; ERBA2; NR1A2; THRB1; THRB2; C-ERBA-2; C-ERBA-BETA
Accession No.	Swiss-Prot:P10827/P10828NCBI Gene ID:7067/7068NCBI Protein:NP_955366/NP_000452
Uniprot	P10827
GeneID	7067;
Concentration	0.4mg/ml
Formulation	Rabbit IgG in pH7.4 PBS, 0.05% NaN <sub>3</sub> , 40% Glycerol.
Storage	Store at -20°C

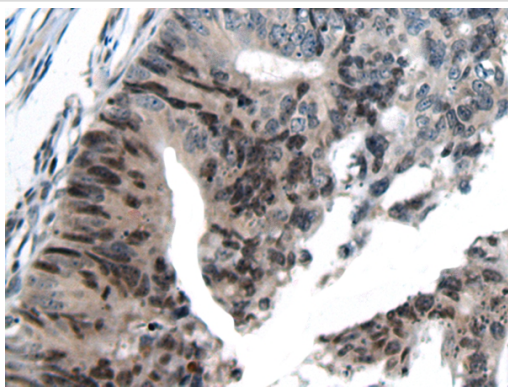
## Application Details

Immunohistochemistry: 1: 20-100

## Images



The image on the left is immunohistochemistry of paraffin-embedded Human liver cancer tissue using 46684(THRA/THRB Antibody) at dilution 1/20, on the right is treated with synthetic peptide. (Original magnification: x200)



The image on the left is immunohistochemistry of paraffin-embedded Human colorectal cancer tissue using 46684(THRA/THRB Antibody) at dilution 1/20, on the right is treated with synthetic peptide. (Original magnification: x200)

## Background

The protein encoded by this gene is a nuclear hormone receptor for triiodothyronine. It is one of the several receptors for thyroid hormone, and has been shown to mediate the biological activities of thyroid hormone. Knockout studies in mice suggest that the different receptors, while having certain extent of redundancy, may mediate different functions of thyroid hormone. Alternatively spliced transcript variants encoding distinct isoforms have been reported.

Note: This product is for in vitro research use only