

## TIMM21 Antibody

Catalog No: #46685

Orders: [order@signalwayantibody.com](mailto:order@signalwayantibody.com)Support: [tech@signalwayantibody.com](mailto:tech@signalwayantibody.com)

## Description

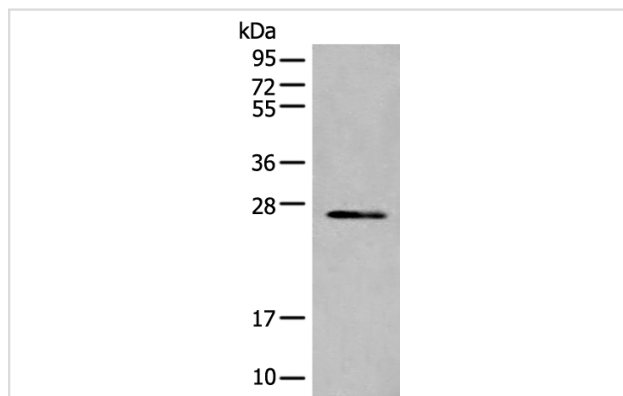
Product Name	TIMM21 Antibody
Host Species	Rabbit
Clonality	Polyclonal
Purification	Antigen affinity purification
Applications	WB IHC
Species Reactivity	Hu
Specificity	The antibody detects endogenous levels of total TIMM21 protein.
Immunogen Type	peptide
Immunogen Description	Synthetic protein corresponding to residues near the C terminal of human TIMM21
Target Name	TIMM21
Other Names	TIM21; HSPC154; C18orf55
Accession No.	Swiss-Prot:Q9BVV7NCBI Gene ID:29090NCBI Protein:BC000892
Uniprot	Q9BVV7
GeneID	29090;
Calculated MW	28 kDa
Concentration	0.5mg/ml
Formulation	Rabbit IgG in pH7.4 PBS, 0.05% NaN <sub>3</sub> , 40% Glycerol.
Storage	Store at -20°C

## Application Details

Western blotting: 1:200-1:1000

Immunohistochemistry: 1: 20-100

## Images

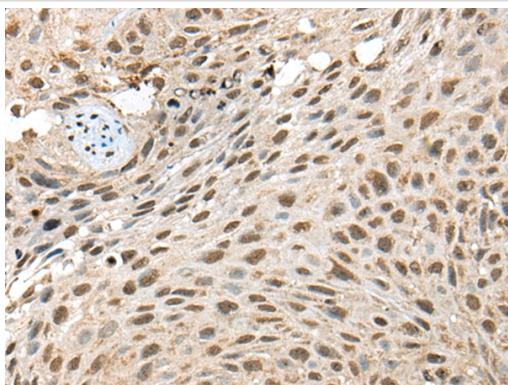


Gel: 12%SDS-PAGE

lysate: 40 B<sub>2</sub>g, Lane: SKOV3 cell lysate,

Primary antibody: 46685B (TIMM21 Antibody) at dilution 1/200

Secondary antibody: Goat anti rabbit IgG at 1/8000 dilution,  
Exposure time: 1 minute



The image on the left is immunohistochemistry of paraffin-embedded Human lung cancer tissue using 46685(TIMM21 Antibody) at dilution 1/25, on the right is treated with fusion protein. (Original magnification: x200)

## Background

Participates in the translocation of transit peptide-containing proteins across the mitochondrial inner membrane. Also required for assembly of mitochondrial respiratory chain complex I and complex IV as component of some MITRAC complex, a cytochrome c oxidase (COX) assembly intermediate complex. TIM21 probably shuttles between the presequence translocase and respiratory-chain assembly intermediates in a process that promotes incorporation of early nuclear-encoded subunits into these complexes.

Note: This product is for in vitro research use only