

## UTY Antibody

Catalog No: #46704

Orders: [order@signalwayantibody.com](mailto:order@signalwayantibody.com)Support: [tech@signalwayantibody.com](mailto:tech@signalwayantibody.com)

## Description

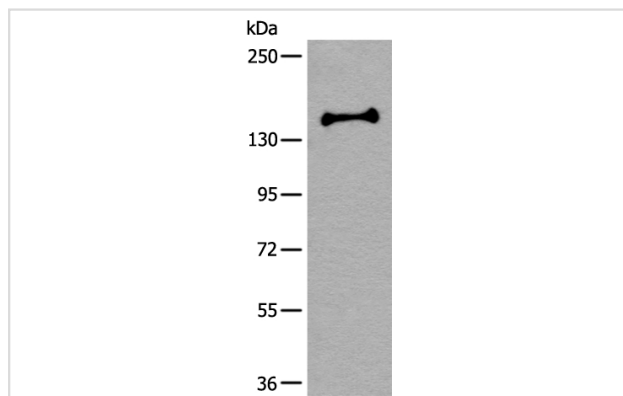
Product Name	UTY Antibody
Host Species	Rabbit
Clonality	Polyclonal
Purification	Antigen affinity purification
Applications	WB IHC
Species Reactivity	Hu Ms
Specificity	The antibody detects endogenous levels of total UTY protein.
Immunogen Type	peptide
Immunogen Description	Full length fusion protein of human UTY
Target Name	UTY
Other Names	UTY1; KDM6AL
Accession No.	Swiss-Prot:O14607NCBI Gene ID:7404NCBI Protein:BC071744
Uniprot	O14607
GeneID	7404;
Calculated MW	150 kDa
Concentration	0.5mg/ml
Formulation	Rabbit IgG in pH7.4 PBS, 0.05% NaN <sub>3</sub> , 40% Glycerol.
Storage	Store at -20°C

## Application Details

Western blotting: 1:200-1:1000

Immunohistochemistry: 1: 25-100

## Images

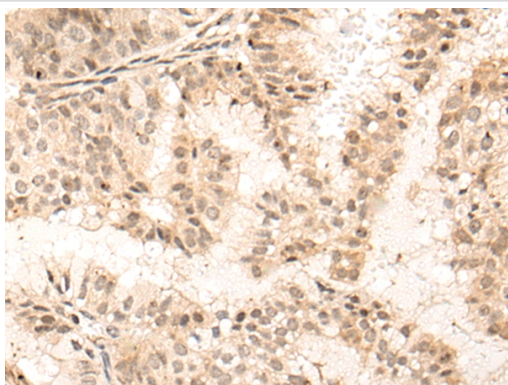


Gel: 6%SDS-PAGE

lysate: 40 B $\mu$ g, Lane: Mouse brain tissue lysate,Primary antibody: 46704B $\times$ B $\times$ UTY Antibody) at dilution 1/200

Secondary antibody: Goat anti rabbit IgG at 1/8000 dilution,

Exposure time: 1 minute



The image on the left is immunohistochemistry of paraffin-embedded Human breast cancer tissue using 46704(UTY Antibody) at dilution 1/30, on the right is treated with fusion protein. (Original magnification: x200)

## Background

This gene encodes a protein containing tetratricopeptide repeats which are thought to be involved in protein-protein interactions. The encoded protein is also a minor histocompatibility antigen which may induce graft rejection of male stem cell grafts. A large number of alternatively spliced transcripts have been observed for this gene, but the full length nature of some of these variants has not been determined.

Note: This product is for in vitro research use only