

WBP1 Antibody

Catalog No: #46707

Orders: order@signalwayantibody.comSupport: tech@signalwayantibody.com

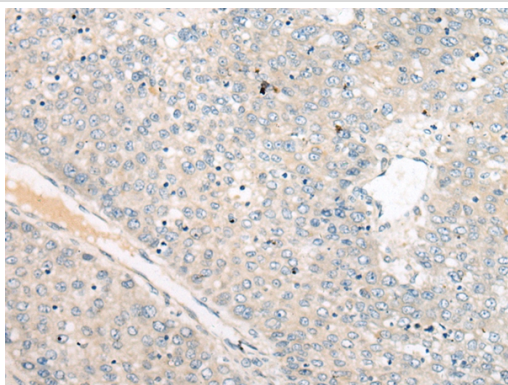
Description

| | |
|-----------------------|---|
| Product Name | WBP1 Antibody |
| Host Species | Rabbit |
| Clonality | Polyclonal |
| Purification | Antigen affinity purification |
| Applications | IHC |
| Species Reactivity | Hu |
| Specificity | The antibody detects endogenous levels of total WBP1 protein. |
| Immunogen Type | peptide |
| Immunogen Description | Full length fusion protein of human WBP1 |
| Target Name | WBP1 |
| Other Names | WBP-1 |
| Accession No. | Swiss-Prot:Q96G27NCBI Gene ID:23559NCBI Protein:BC010012 |
| Uniprot | Q96G27 |
| GeneID | 23559; |
| Concentration | 0.5mg/ml |
| Formulation | Rabbit IgG in pH7.4 PBS, 0.05% NaN ₃ , 40% Glycerol. |
| Storage | Store at -20°C |

Application Details

Immunohistochemistry: 1: 25-100

Images



The image on the left is immunohistochemistry of paraffin-embedded Human liver cancer tissue using 46707(wbP1 Antibody) at dilution 1/30, on the right is treated with fusion protein. (Original magnification: x200)

Background

The globular WW domain, named for the conserved tryptophan residues in the protein motif present in various structural and regulatory proteins, is known to play a role in the mediation of protein-protein interactions. This gene encodes a ligand of the WW domain of the Yes kinase-associated protein. Readthrough transcription of the neighboring upstream gene, which encodes INO80 complex subunit B, into this gene generates a non-coding transcript.

Note: This product is for in vitro research use only