

XPO6 Antibody

Catalog No: #46712

Orders: order@signalwayantibody.comSupport: tech@signalwayantibody.com

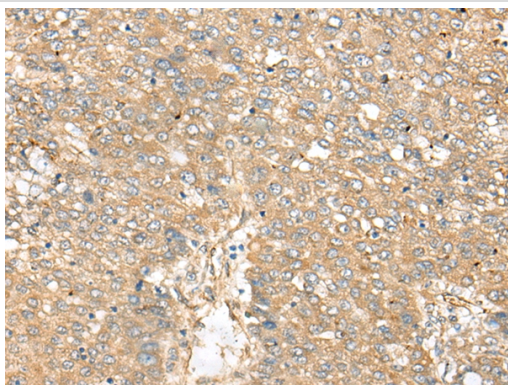
Description

Product Name	XPO6 Antibody
Host Species	Rabbit
Clonality	Polyclonal
Purification	Antigen affinity purification
Applications	IHC
Species Reactivity	Hu
Specificity	The antibody detects endogenous levels of total XPO6 protein.
Immunogen Type	peptide
Immunogen Description	Synthetic protein corresponding to residues near the C terminal of human XPO6
Target Name	XPO6
Other Names	EXP6; RANBP20
Accession No.	Swiss-Prot:Q96QU8NCBI Gene ID:23214NCBI Protein:BC014071
Uniprot	Q96QU8
GeneID	23214;
Concentration	0.8mg/ml
Formulation	Rabbit IgG in pH7.4 PBS, 0.05% NaN ₃ , 40% Glycerol.
Storage	Store at -20°C

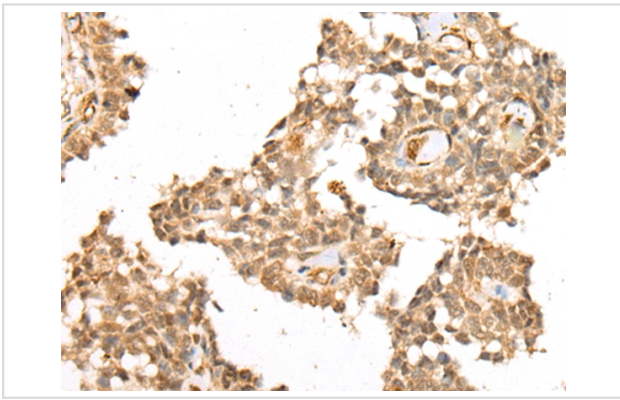
Application Details

Immunohistochemistry: 1: 25-100

Images



The image on the left is immunohistochemistry of paraffin-embedded Human liver cancer tissue using 46712(XPO6 Antibody) at dilution 1/35, on the right is treated with fusion protein. (Original magnification: x200)



The image on the left is immunohistochemistry of paraffin-embedded Human ovarian cancer tissue using 46712(XPO6 Antibody) at dilution 1/35, on the right is treated with fusion protein. (Original magnification: x200)

Background

The protein encoded by this gene is a member of the importin-beta family. Members of this family are regulated by the GTPase Ran to mediate transport of cargo across the nuclear envelope. This protein has been shown to mediate nuclear export of profilin-actin complexes. A pseudogene of this gene is located on the long arm of chromosome 14. Alternative splicing results in multiple transcript variants that encode different protein isoforms.

Note: This product is for in vitro research use only