

FLASH Antibody

Catalog No: #24106

Orders: order@signalwayantibody.comSupport: tech@signalwayantibody.com

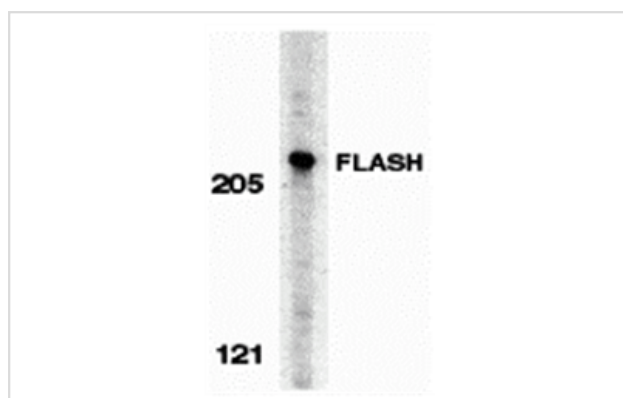
Description

Product Name	FLASH Antibody
Host Species	Rabbit
Clonality	Polyclonal
Purification	Affinity chromatography purified via peptide column
Applications	ELISA WB ICC
Species Reactivity	Hu
Immunogen Type	Peptide
Immunogen Description	Raised against a synthetic peptide corresponding to amino acids near the carboxy terminus of human FLASH which differ from those of mouse by one amino acid.
Target Name	FLASH
Other Names	FLASH
Accession No.	Swiss-Prot:Q9UKL3Gene ID:9994
Uniprot	Q9UKL3
GeneID	9994;
Concentration	1mg/ml
Formulation	Supplied in PBS containing 0.02% sodium azide.
Storage	Can be stored at -20°C, stable for one year. As with all antibodies care should be taken to avoid repeated freeze thaw cycles. Antibodies should not be exposed to prolonged high temperatures.

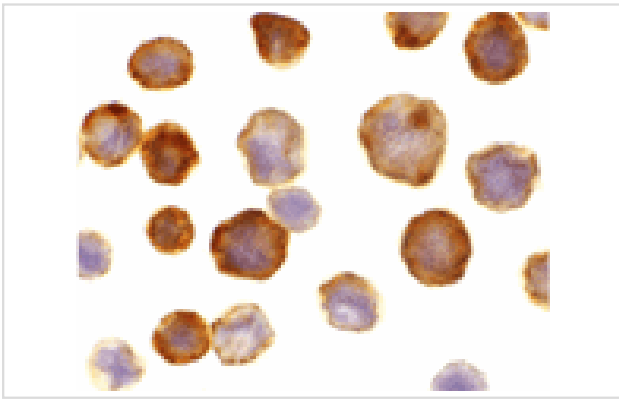
Application Details

Predicted MW: 220 kd

Images



Western blot analysis of FLASH in HeLa whole cell lysate with FLASH antibody at 0.5 ug/mL.



Immunocytochemistry of FLASH in HeLa cells with FLASH antibody at 10 ug/mL.

Background

A novel mammalian CED-4 homologous was recently identified and cloned in mouse and human and designated FLASH (for FLICE-associated huge protein). FLASH is involved in Fas induced apoptosis. It is recruited to Fas after the receptor cross-linking. Overexpression of wild type of FLASH facilitates and its dominant negative form inhibits Fas induced apoptosis. FLASH interacts with the DEDs of caspase-8 and FADD through the DED-like domain of FLASH and mediates activation of caspase-8. There are parallels between FLASH and Apaf-1/CED-4 although there are arguments against their structural similarity. FLASH is widely expressed.

Note: This product is for in vitro research use only