

Bnip3L Antibody

Catalog No: #24112

Orders: order@signalwayantibody.comSupport: tech@signalwayantibody.com

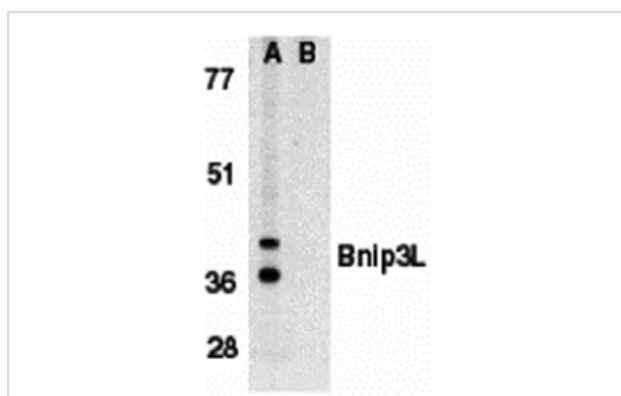
Description

| | |
|-----------------------|---|
| Product Name | Bnip3L Antibody |
| Host Species | Rabbit |
| Clonality | Polyclonal |
| Purification | Affinity chromatography purified via peptide column |
| Applications | ELISA WB IHC |
| Species Reactivity | Hu |
| Immunogen Type | Peptide |
| Immunogen Description | Raised against a peptide corresponding to amino acids 77 to 92 of human origin, which are identical to those of mouse Bnip3L. |
| Target Name | Bnip3L |
| Other Names | Nix |
| Accession No. | Swiss-Prot:O60238Gene ID:665 |
| Uniprot | O60238 |
| GeneID | 665; |
| Concentration | 1mg/ml |
| Formulation | Supplied in PBS containing 0.02% sodium azide. |
| Storage | Can be stored at -20°C, stable for one year. As with all antibodies care should be taken to avoid repeated freeze thaw cycles. Antibodies should not be exposed to prolonged high temperatures. |

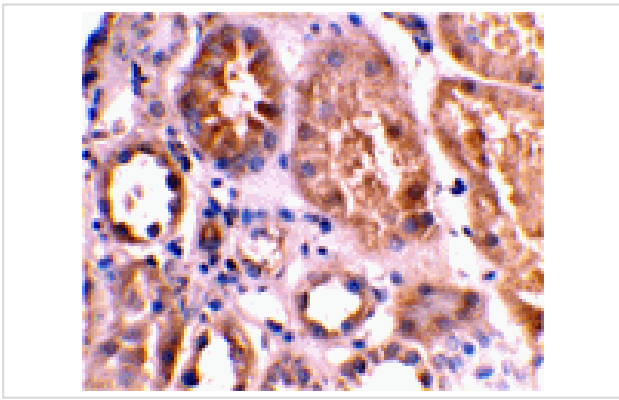
Application Details

Predicted MW: 40 kd

Images



Western blot analysis of Bnip3L in K562 whole cell lysate in the absence (A), or presence (B) of immunogenic peptide (2289P) with Bnip3L antibody (IN) at 1 ug/mL.



Immunohistochemical staining of human kidney tissue using Bnip3L antibody at 2 ug/mL.

Background

Members in the Bcl-2 family are critical regulators of apoptosis by either inhibiting or promoting cell death. Bcl-2 homology 3 (BH3) domain is a potent death domain. BH3 domain containing pro-apoptotic proteins, including Bad, Bax, Bid, Bik, Hrk, Nip3, and Bim, form a growing subclass of the Bcl-2 family. A novel BH3 domain containing protein was recently identified and designated Bnip3L, Bnip3alpha, and Nix (for Nip3-like protein X). Bnip3L/Bnip3alpha/Nix is a homolog of the E1B 19K/Bcl-2 binding and pro-apoptotic protein Bnip3. Overexpression of Bnip3L induces apoptosis. Bnip3L interacts with and overcomes suppresses by Bcl-2 and Bcl-xL. Bnip3L is localized in mitochondria. The messenger RNA of Bnip3L is ubiquitously expressed in human tissues. Bnip3L and Bnip3 form a new subfamily of the pro-apoptotic mitochondrial proteins.

Note: This product is for in vitro research use only