

Raf1(Phospho-Ser338) Antibody

Catalog No: #11204

Package Size: #11204-1 50ul #11204-2 100ul

Orders: order@signalwayantibody.com

Support: tech@signalwayantibody.com

Description

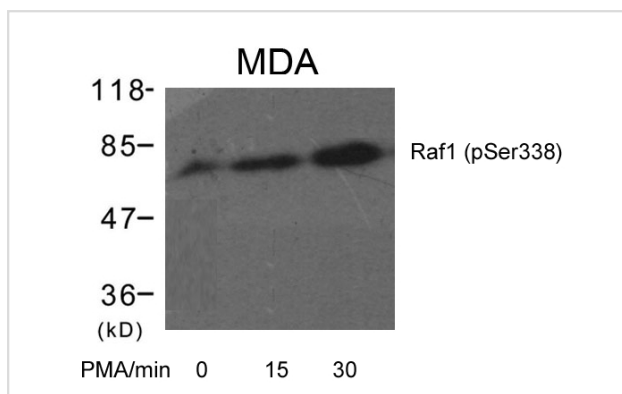
Product Name	Raf1(Phospho-Ser338) Antibody
Host Species	Rabbit
Clonality	Polyclonal
Purification	Antibodies were produced by immunizing rabbits with synthetic phosphopeptide and KLH conjugates. Antibodies were purified by affinity-chromatography using epitope-specific phosphopeptide. Non-phospho specific antibodies were removed by chromatography using non-phosphopeptide.
Applications	WB
Species Reactivity	Hu Ms Rt
Specificity	The antibody detects endogenous level of Raf1 only when phosphorylated at serine 338.
Immunogen Type	Peptide-KLH
Immunogen Description	Peptide sequence around phosphorylation site of serine 338 (R-D-S(p)-S-Y) derived from Human RAF.
Target Name	Raf1
Modification	Phospho
Other Names	C-RAF; C-Raf; CRAF
Accession No.	Swiss-Prot: P04049 NCBI Protein: NP_002871.1
Uniprot	P04049
GeneID	5894;
Concentration	1.0mg/ml
Formulation	Supplied at 1.0mg/mL in phosphate buffered saline (without Mg ²⁺ and Ca ²⁺), pH 7.4, 150mM NaCl, 0.02% sodium azide and 50% glycerol.
Storage	Store at -20°C for long term preservation (recommended). Store at 4°C for short term use.

Application Details

Predicted MW: 73kd

Western blotting: 1:500~1:1000

Images



Western blot analysis of extracts from MDA cells untreated or treated with PMA for the indicated times using Raf1(Phospho-Ser338) Antibody #11204.

Background

Involved in the transduction of mitogenic signals from the cell membrane to the nucleus. Part of the Ras-dependent signaling pathway from receptors to the nucleus. Protects cells from apoptosis mediated by STK3.

Adams DG, et al. (2005) *J Biol Chem.* 280(52):42644-54.

Miura S, et al. (2003) *Biochem Biophys Res Commun.* 306(4):924-9.

Noser JA, et al. (2007) *Mol Ther.* 15(8):1531-6.

Note: This product is for in vitro research use only