

IRAK-M Antibody

Catalog No: #24128

Orders: order@signalwayantibody.comSupport: tech@signalwayantibody.com

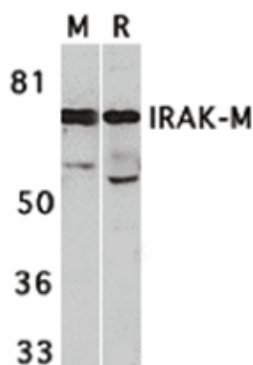
Description

| | |
|-----------------------|---|
| Product Name | IRAK-M Antibody |
| Host Species | Rabbit |
| Clonality | Polyclonal |
| Purification | Affinity chromatography purified via peptide column |
| Applications | ELISA WB IHC |
| Species Reactivity | Hu Ms Rt |
| Specificity | IRAK-M antibody has no cross response to IRAK or IRAK2. |
| Immunogen Type | Peptide |
| Immunogen Description | Raised against a peptide corresponding to amino acids from the carboxy terminus of human IRAK-M. |
| Target Name | IRAK-M |
| Accession No. | Swiss-Prot:Q9Y616Gene ID:11213 |
| Uniprot | Q9Y616 |
| GeneID | 11213; |
| Concentration | 1mg/ml |
| Formulation | Supplied in PBS containing 0.02% sodium azide. |
| Storage | Can be stored at -20°C, stable for one year. As with all antibodies care should be taken to avoid repeated freeze thaw cycles. Antibodies should not be exposed to prolonged high temperatures. |

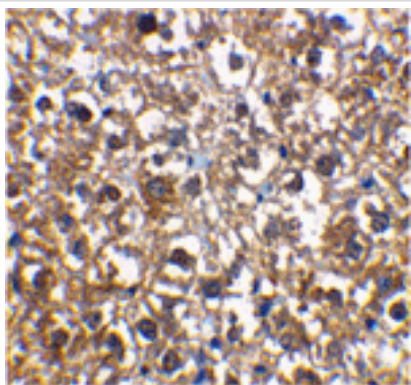
Application Details

Predicted MW: 68 kd

Images



Western blot analysis of IRAK-M in mouse spleen (M) and rat liver (R) tissue lysates with IRAK-M antibody at 1 ug/mL.



Immunohistochemical staining of rat liver cells using IRAK-M antibody at 2 ug/mL.

Background

Interleukin-1 (IL-1) and lipopolysaccharide (LPS) induces cellular response through IL-1 receptor (IL-1R) and Toll like receptors (TLR). IL-1 receptor-associated kinase (IRAK and IRAK2) mediates the activation of NF-betaB by IL-1/Toll receptors, which is a pivotal transcription factor mediating inflammatory and immune response. A novel member in the IRAK/Pelle family was recently identified and designated IRAK-M. IRAKs associate with IL-1/Toll receptors after IL-1 or LPS stimulation and the dominant negative mutants of IRAKs inhibit IL-1 or LPS induced NF-betaB activation. Members in IRAK/Pelle family play a central role in IL-1R/TLR mediated inflammatory responses to cytokine IL-1 and LPS.

Note: This product is for in vitro research use only