

CENPA (Phospho-Ser68) Antibody

Catalog No: #SAB459P



Package Size: #SAB459P-1 50ul #SAB459P-2 100ul

Orders: [order@signalwayantibody.com](mailto:order@signalwayantibody.com)  
Support: [tech@signalwayantibody.com](mailto:tech@signalwayantibody.com)

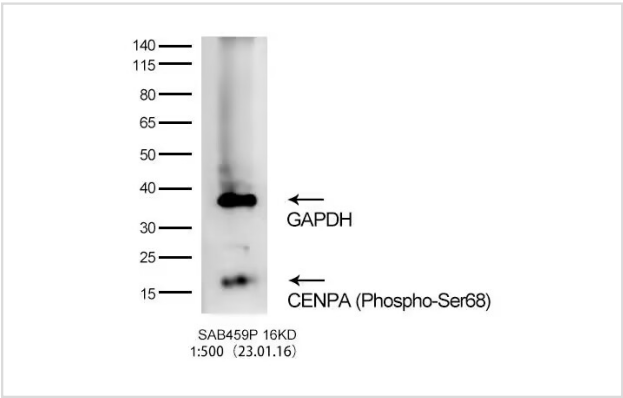
Description

Product Name	CENPA (Phospho-Ser68) Antibody
Host Species	Rabbit
Clonality	Polyclonal
Purification	Antibodies were produced by immunizing rabbits with synthetic peptide and KLH conjugates. Antibodies were purified by affinity-chromatography using epitope-specific peptide.
Applications	Custom antibody
Species Reactivity	Hu
Immunogen Type	Peptide-KLH
Target Name	CENPA
Other Names	Centromere autoantigen A??CENP-A
Accession No.	uniprot:P49450
Calculated MW	16kDa
Formulation	Supplied at 1.0mg/mL in phosphate buffered saline (without Mg2+ and Ca2+), pH 7.4, 150mM NaCl, 0.02% sodium azide and 50% glycerol.
Storage	Store at -20oΩ½oΩ½C for long term preservation (recommended). Store at 4oΩ½oΩ½C for short term use.

Application Details

Western blotting: 1:500~1:1000

Images



Western blot analysis of extracts of Rat Spleen

Background

Histone H3-like nucleosomal protein that is specifically found in centromeric nucleosomes (PubMed:7962047, PubMed:9024683, PubMed:11756469, PubMed:14667408, PubMed:15702419, PubMed:15475964, PubMed:15282608, PubMed:17651496, PubMed:19114591, PubMed:27499292, PubMed:20739937). Replaces conventional H3 in the nucleosome core of centromeric chromatin at the inner plate of the kinetochore (PubMed:18072184). The presence of CENPA subtly modifies the nucleosome structure and the way DNA is wrapped around the nucleosome and

gives rise to protruding DNA ends that are less well-ordered and rigid compared to nucleosomes containing histone H3 (PubMed:27499292, PubMed:26878239).

---

Note: This product is for in vitro research use only