

Perforin Rabbit Polyclonal Antibody

Catalog No: #29291

Package Size: #29291-1 50ul #29291-2 100ul

Orders: order@signalwayantibody.comSupport: tech@signalwayantibody.com

Description

Product Name	Perforin Rabbit Polyclonal Antibody
Host Species	Rabbit
Clonality	Polyclonal
Isotype	IgG
Purification	Affinity purification
Applications	WB,IHC,IF
Species Reactivity	Human,Mouse,Rat
Immunogen Description	Recombinant fusion protein of human Perforin (NP_001076585.1).
Other Names	PRF1;FLH2;HPLH2;P1;PFN1;PFP;perforin-1;Perforin
Accession No.	Swiss Prot:P14222GenelD:5551
Uniprot	P14222
GenelD	5551
Calculated MW	61kDa
SDS-PAGE MW	70kDa
Formulation	Buffer: PBS with 0.02% sodium azide,50% glycerol,pH7.3.
Storage	Store at -20°C. Avoid freeze / thaw cycles.

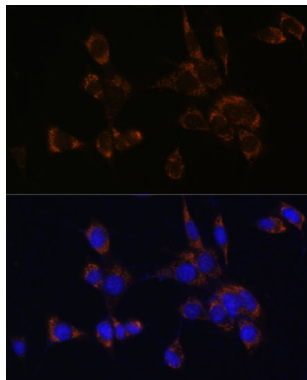
Application Details

WB□1:500 - 1:2000

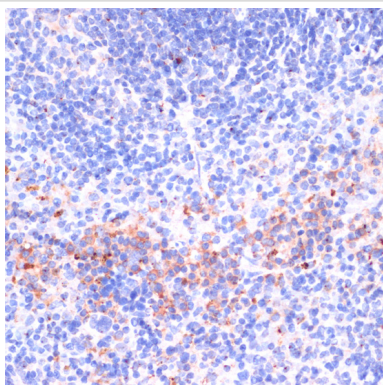
IHC□1:50 - 1:200

IF□1:50 - 1:200

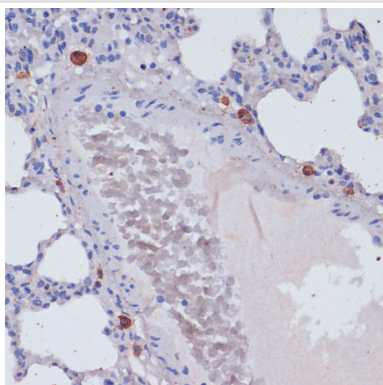
Images



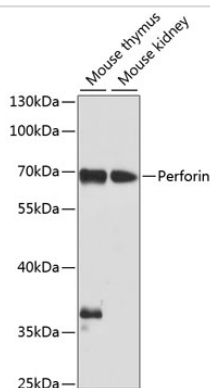
Immunofluorescence analysis of NIH/3T3 cells using Perforin at dilution of 1:100. Blue: DAPI for nuclear staining.



Immunohistochemistry of paraffin-embedded mouse spleen using Perforin at dilution of 1:100 (40x lens).



Immunohistochemistry of paraffin-embedded rat lung using Perforin at dilution of 1:100 (40x lens).



Western blot analysis of extracts of various cell lines, using Perforin at 1:1000 dilution.

Background

The protein encoded by this gene has structural and functional similarities to complement component 9 (C9). Like C9, this protein creates transmembrane tubules and is capable of lysing non-specifically a variety of target cells. This protein is one of the main cytolytic proteins of cytolytic granules, and it is known to be a key effector molecule for T-cell- and natural killer-cell-mediated cytotoxicity. Defects in this gene cause familial hemophagocytic lymphohistiocytosis type 2 (HPLH2), a rare and lethal autosomal recessive disorder of early childhood. Alternative splicing results in multiple transcript variants encoding the same protein.

Note: This product is for in vitro research use only