

GPR55 Rabbit Polyclonal Antibody

Catalog No: #53454



Package Size: #53454-1 50ul #53454-2 100ul

Orders: order@signalwayantibody.com
Support: tech@signalwayantibody.com

Description

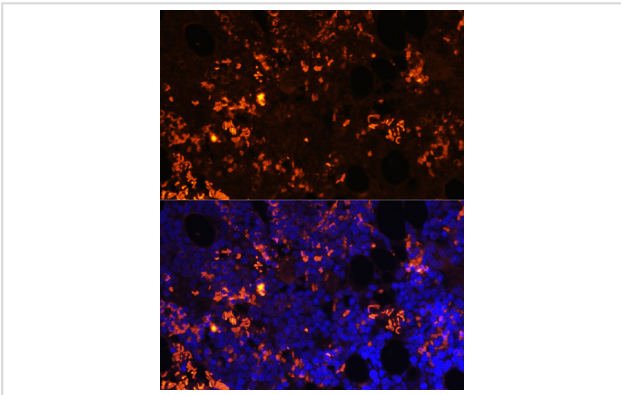
Product Name	GPR55 Rabbit Polyclonal Antibody
Host Species	Rabbit
Clonality	Polyclonal
Isotype	IgG
Purification	Affinity purification
Applications	WB,IF
Species Reactivity	Mouse,Rat
Immunogen Description	Recombinant fusion protein of human GPR55 (NP_005674.2).
Other Names	GPR55;LPIR1
Accession No.	Swiss Prot:Q9Y2T6GeneID:9290
Uniprot	Q9Y2T6
Calculated MW	36kDa
SDS-PAGE MW	37kDa
Concentration	2.86 mg/ml
Formulation	PBS with 0.01% thimerosal, 50% glycerol, pH7.3.
Storage	Store at -20°C. Avoid freeze / thaw cycles.

Application Details

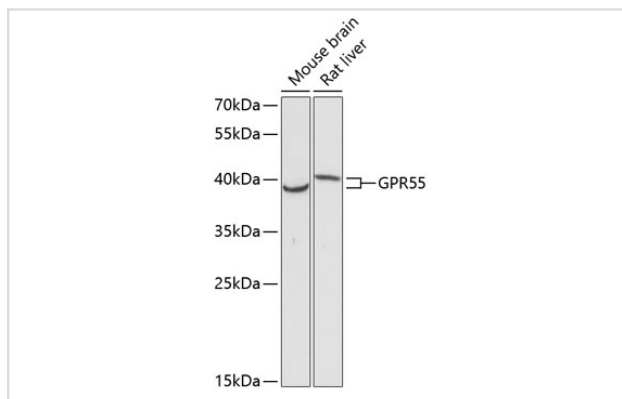
WB 1:500 - 1:2000

IF 1:50 - 1:200

Images



Immunofluorescence analysis of rat bone marrow cells using GPR55 at dilution of 1:100. Blue: DAPI for nuclear staining.



Western blot analysis of extracts of various cell lines, using GPR55 at 1:3000 dilution.

Background

This gene belongs to the G-protein-coupled receptor superfamily. The encoded integral membrane protein is a likely cannabinoid receptor. It may be involved in several physiological and pathological processes by activating a variety of signal transduction pathways.

Note: This product is for in vitro research use only