

## WNT2 Rabbit Polyclonal Antibody

Catalog No: #29238

Package Size: #29238-1 50ul #29238-2 100ul

Orders: [order@signalwayantibody.com](mailto:order@signalwayantibody.com)Support: [tech@signalwayantibody.com](mailto:tech@signalwayantibody.com)

## Description

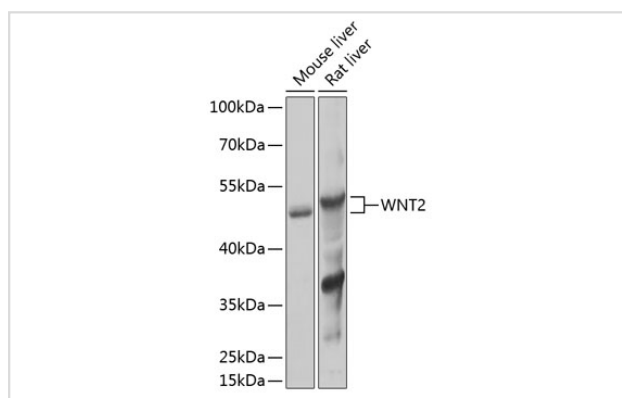
Product Name	WNT2 Rabbit Polyclonal Antibody
Host Species	Rabbit
Clonality	Polyclonal
Isotype	IgG
Purification	Affinity purification
Applications	WB,IF
Species Reactivity	Human, Mouse, Rat
Immunogen Description	A synthetic peptide of human WNT2 (NP_003382.1).
Other Names	WNT2;INT1L1;IRP
Accession No.	Swiss Prot:P09544GenelD:7472
Uniprot	P09544
GenelD	7472
Calculated MW	40kDa
SDS-PAGE MW	50kDa
Formulation	Buffer: PBS with 0.02% sodium azide,50% glycerol,pH7.3.
Storage	Store at -20°C. Avoid freeze / thaw cycles.

## Application Details

WB 1:500 - 1:2000

IF 1:50 - 1:200

## Images



Western blot analysis of extracts of various cell lines, using WNT2 at 1:1000 dilution.

## Background

This gene is a member of the WNT gene family. The WNT gene family consists of structurally related genes which encode secreted signaling proteins. These proteins have been implicated in oncogenesis and in several developmental processes, including regulation of cell fate and patterning during

embryogenesis. Alternatively spliced transcript variants have been identified for this gene.

---

Note: This product is for in vitro research use only