

ARTS Antibody

Catalog No: #24168



Orders: order@signalwayantibody.com
Support: tech@signalwayantibody.com

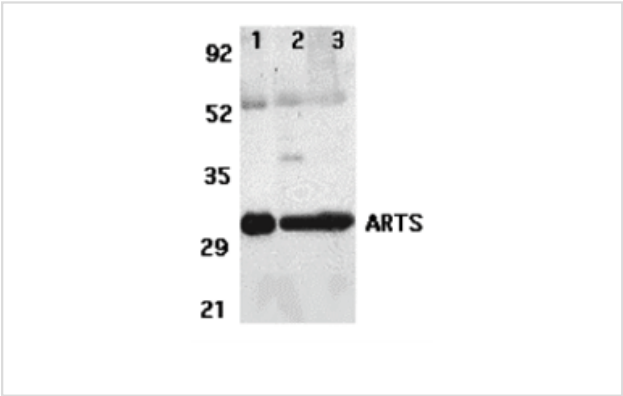
Description

Product Name	ARTS Antibody
Host Species	Rabbit
Clonality	Polyclonal
Purification	Affinity chromatography purified via peptide column
Applications	ELISA WB IHC
Species Reactivity	Hu
Immunogen Type	Peptide
Immunogen Description	Raised against a synthetic peptide corresponding to amino acids near the amino terminus of human ARTS.
Target Name	ARTS
Accession No.	Swiss-Prot:O43236Gene ID:5414
Uniprot	O43236
GeneID	5414;
Concentration	1mg/ml
Formulation	Supplied in PBS containing 0.02% sodium azide.
Storage	Can be stored at -20°C, stable for one year. As with all antibodies care should be taken to avoid repeated freeze thaw cycles. Antibodies should not be exposed to prolonged high temperatures.

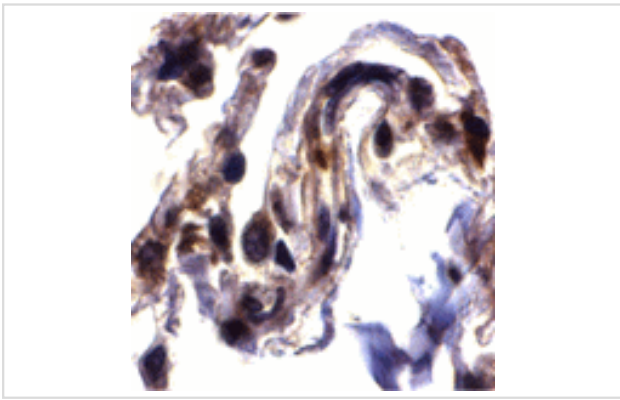
Application Details

Predicted MW: 32 kd

Images



Western blot analysis of ARTS expression in human lung (lane 1), spleen (lane 2), and kidney (lane 3) tissue lysates with ARTS antibody at 2 ug /ml.



Immunohistochemistry of ARTS in human lung tissue with ARTS antibody at 2 ug/mL.

Background

Apoptosis is related to many diseases and development. Mitochondrial proteins, such as cytochrome c, Apaf-1, and AIF play important role in apoptosis. A novel mitochondrial septin-like protein was identified recently and designated ARTS for apoptosis related protein in TGF-beta signaling pathway. ARTS that is encoded by the human septin H5/PNUTL2/CDCrel2b gene is located to mitochondria and translocates to the nucleus when apoptosis occurs. ARTS is expressed in many tissues. It enhances cell death induced by TGF-beta and, to a lesser extent, by other apoptotic agents, such as TNF- α and Fas ligand.

Note: This product is for in vitro research use only