

RhoA Rabbit Polyclonal Antibody

Catalog No: #53753

Package Size: #53753-1 50ul #53753-2 100ul

Orders: order@signalwayantibody.comSupport: tech@signalwayantibody.com

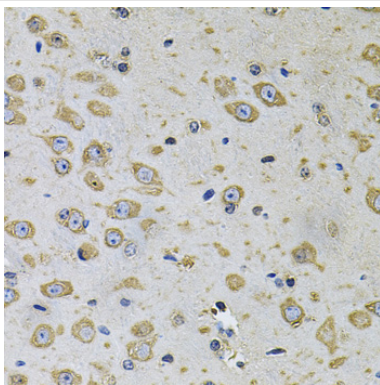
Description

Product Name	RhoA Rabbit Polyclonal Antibody
Host Species	Rabbit
Clonality	Polyclonal
Isotype	IgG
Purification	Affinity purification
Applications	WB,IHC
Species Reactivity	Human,Mouse,Rat
Immunogen Description	A synthetic peptide of human RhoA (NP_001655.1).
Other Names	ARH12;ARHA;RHO12;RHOH12;Rho;RHOA;RhoA
Accession No.	Swiss Prot:P61586GenelD:387
Uniprot	P61586
Calculated MW	21kDa
SDS-PAGE MW	21kDa
Formulation	Buffer: PBS with 0.02% sodium azide,50% glycerol,pH7.3.
Storage	Store at -20°C. Avoid freeze / thaw cycles.

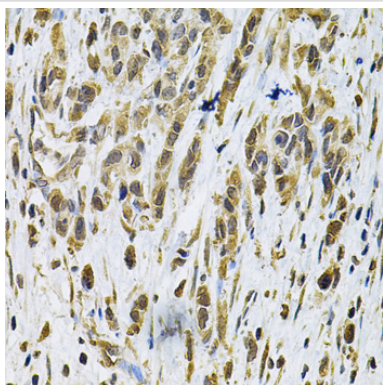
Application Details

WB□1:500 - 1:2000IHC□1:50 - 1:200

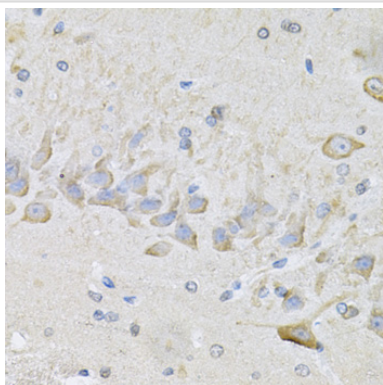
Images



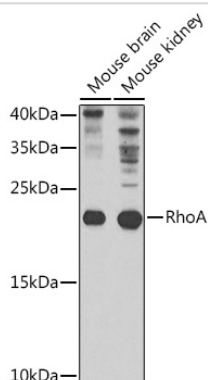
Immunohistochemistry of paraffin-embedded rat brain using RhoA at dilution of 1:100 (40x lens).



Immunohistochemistry of paraffin-embedded human gastric cancer using RhoA at dilution of 1:100 (40x lens).



Immunohistochemistry of paraffin-embedded mouse brain using RhoA at dilution of 1:100 (40x lens).



Western blot analysis of extracts of various cell lines, using RhoA at 1:1000 dilution.

Background

This gene encodes a member of the Rho family of small GTPases, which cycle between inactive GDP-bound and active GTP-bound states and function as molecular switches in signal transduction cascades. Rho proteins promote reorganization of the actin cytoskeleton and regulate cell shape, attachment, and motility. Overexpression of this gene is associated with tumor cell proliferation and metastasis. Multiple alternatively spliced variants have been identified.

Note: This product is for in vitro research use only