

# CD80 Rabbit Polyclonal Antibody

Catalog No: #29570



Package Size: #29570-1 50ul #29570-2 100ul

Orders: [order@signalwayantibody.com](mailto:order@signalwayantibody.com)  
Support: [tech@signalwayantibody.com](mailto:tech@signalwayantibody.com)

## Description

Product Name	CD80 Rabbit Polyclonal Antibody
Host Species	Rabbit
Clonality	Polyclonal
Isotype	IgG
Purification	Affinity purification
Applications	WB,IHC,IF
Species Reactivity	Human,Mouse,Rat
Immunogen Description	A synthetic peptide of human CD80 (NP_005182.1).
Other Names	B7;B7-1;B7.1;BB1;CD28LG;CD28LG1;LAB7;CD80
Accession No.	Swiss Prot:P33681GenelD:941
Calculated MW	18kDa/29kDa/33kDa
SDS-PAGE MW	60kDa
Formulation	Buffer: PBS with 0.02% sodium azide,50% glycerol,pH7.3.
Storage	Store at -20°C. Avoid freeze / thaw cycles.

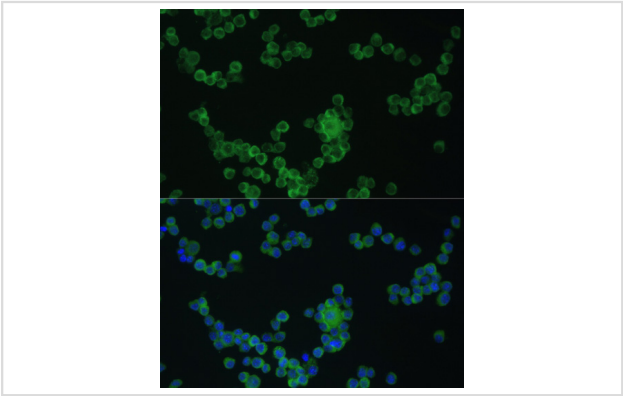
## Application Details

WB□1:500 - 1:2000

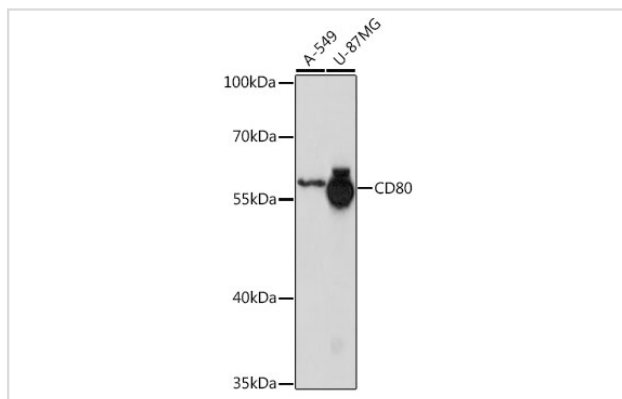
IHC□1:50 - 1:200

IF□1:50 - 1:200

## Images



Immunofluorescence analysis of Raw264.7 cells using CD80 at dilution of 1:100. Blue: DAPI for nuclear staining.



Western blot analysis of extracts of various cell lines, using CD80 at 1:1000 dilution.

## Background

The protein encoded by this gene is a membrane receptor that is activated by the binding of CD28 or CTLA-4. The activated protein induces T-cell proliferation and cytokine production. This protein can act as a receptor for adenovirus subgroup B and may play a role in lupus neuropathy.

Note: This product is for in vitro research use only