

NF-kB p65 Rabbit Polyclonal Antibody

Catalog No: #54171



Package Size: #54171-1 50ul #54171-2 100ul

Orders: order@signalwayantibody.com  
Support: tech@signalwayantibody.com

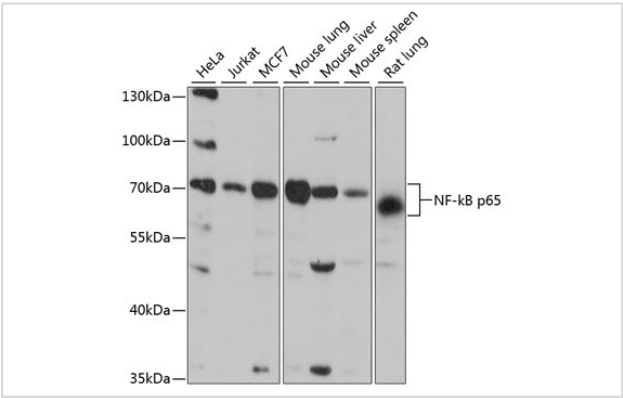
Description

Product Name	NF-kB p65 Rabbit Polyclonal Antibody
Host Species	Rabbit
Clonality	Polyclonal
Isotype	IgG
Purification	Affinity purification
Applications	WB,IF
Species Reactivity	Human,Mouse,Rat
Immunogen Description	A synthetic peptide of human NF-kB p65
Other Names	NFKB3;p65;NF-kB p65;RELA;CMCU
Accession No.	Swiss Prot:Q04206GeneID:5970
Uniprot	Q04206
Calculated MW	58kDa/59kDa/60kDa
SDS-PAGE MW	65kDa
Formulation	Buffer: PBS with 0.02% sodium azide,50% glycerol,pH7.3.
Storage	Store at -20°C. Avoid freeze / thaw cycles.

Application Details

WB 1:500 - 1:2000IF 1:50 - 1:200

Images



Western blot analysis of extracts of various cell lines, using NF-kB p65 at 1:3000 dilution.

Background

NF-kappa-B is a ubiquitous transcription factor involved in several biological processes. It is held in the cytoplasm in an inactive state by specific inhibitors. Upon degradation of the inhibitor, NF-kappa-B moves to the nucleus and activates transcription of specific genes. NF-kappa-B is composed of NFKB1 or NFKB2 bound to either REL, RELA, or RELB. The most abundant form of NF-kappa-B is NFKB1 complexed with the product of this gene, RELA. Four transcript variants encoding different isoforms have been found for this gene.

---

Note: This product is for in vitro research use only