

Bcl-G Antibody

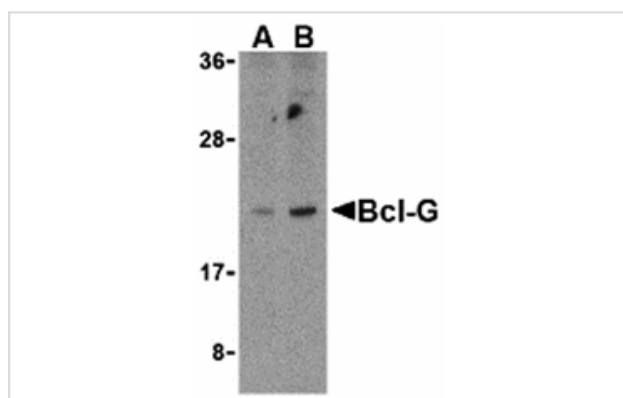
Catalog No: #24203

Orders: order@signalwayantibody.comSupport: tech@signalwayantibody.com

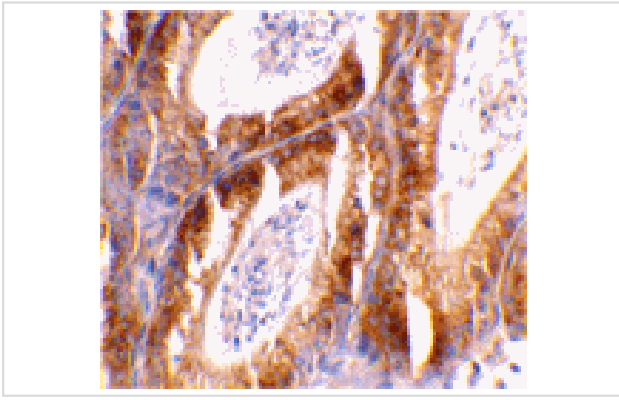
Description

Product Name	Bcl-G Antibody
Host Species	Rabbit
Clonality	Polyclonal
Purification	Ion exchange chromatography purified
Applications	ELISA WB IHC
Species Reactivity	Hu Ms Rt
Specificity	Although antibody should react with both isoforms, only the Bcl-GS protein has been observed
Immunogen Type	Peptide
Immunogen Description	Raised against a peptide corresponding to 15 amino acids near the C-terminus of human Bcl-G.
Target Name	Bcl-G
Other Names	Bcl-2-like 14
Accession No.	Swiss-Prot:Q9BZR8Gene ID:79370
Uniprot	Q9BZR8
GeneID	79370;
Concentration	1mg/ml
Formulation	Supplied in PBS containing 0.02% sodium azide.
Storage	Can be stored at -20°C, stable for one year. As with all antibodies care should be taken to avoid repeated freeze thaw cycles. Antibodies should not be exposed to prolonged high temperatures.

Images



Western blot analysis of Bcl-G in U937 cell lysates with Bcl-G antibody at (A) 2.5 and (B) 5 ug/mL.



Immunohistochemical staining of mouse testis tissue using Bcl-G antibody at 2 ug/mL.

Background

Members in the Bcl-2 family are critical regulators of apoptosis by either inhibiting or promoting cell death. Bcl-2 homology 3 (BH3) domain is a potent death domain. BH3 domain containing pro-apoptotic proteins, including Bad, Bax, Bid, Bik, and Hrk, form a growing subclass of the Bcl-2 family. A novel BH3 domain containing protein was recently identified and designated Bcl-G. The mRNA of Bcl-G encodes 2 isoforms, Bcl-GL, which is widely expressed in multiple tissues, and Bcl-GS, which is only found in testis. The Bcl-GS protein is predominantly localized to cytoplasmic organelles whereas Bcl-GL was distributed throughout the cytosol. Overexpression of either protein induced apoptosis, although Bcl-GS was far more potent than Bcl-GL. Apoptosis induction was dependent on the BH3 domain and could be suppressed by co-expression with the anti-apoptotic Bcl-XL protein.

Note: This product is for in vitro research use only