

CARD8 Antibody

Catalog No: #24206

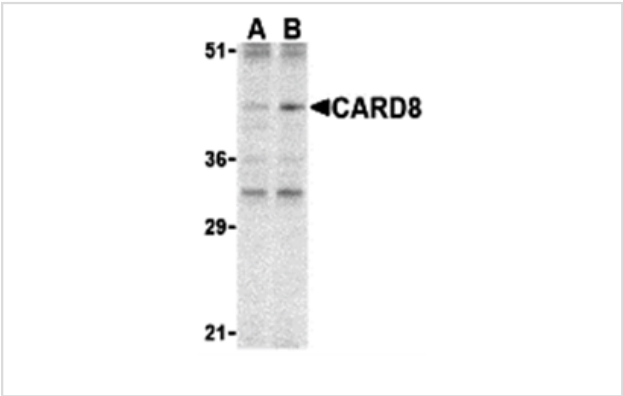


Orders: order@signalwayantibody.com
Support: tech@signalwayantibody.com

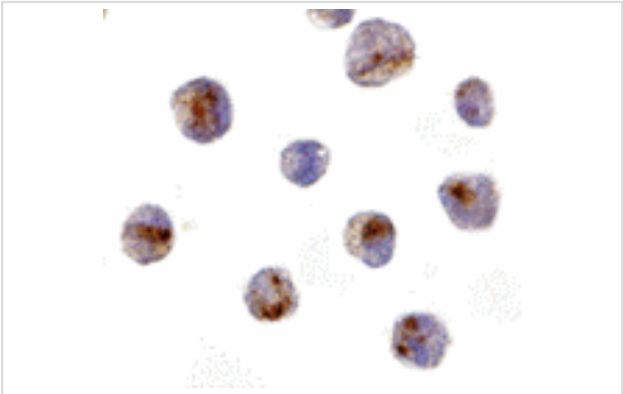
Description

Product Name	CARD8 Antibody
Host Species	Rabbit
Clonality	Polyclonal
Purification	Affinity chromatography purified via peptide column
Applications	ELISA WB ICC
Species Reactivity	Hu
Immunogen Type	Peptide
Immunogen Description	Raised against a synthetic peptide corresponding to amino acids at the C-terminus of human CARD8.
Target Name	CARD8
Other Names	Cardinal, TUCAN
Accession No.	Swiss-Prot:Q9Y2G2Gene ID:22900
Uniprot	Q9Y2G2
GeneID	22900;
Concentration	1mg/ml
Formulation	Supplied in PBS containing 0.02% sodium azide.
Storage	Antibody can be stored at 4°C up to one year. Antibodies should not be exposed to prolonged high temperatures.

Images



Western blot analysis of CARD8 expression in K562 cell lysate with CARD8 antibody at (A) 2 and (B) 4 ug /ml.



Immunocytochemistry of CARD8 in K562 cells with CARD8 antibody at 10 ug/mL.

Background

Apoptosis is related to many diseases and development. Cell death signals are transduced by death domain (DD), death effector domain (DED), and caspase recruitment domain (CARD) containing molecules. CARD containing proteins include some caspases, Apaf-1, CARD4, IAPs, RICK, ARC, RAIDD, BCL-10, and ASC. A novel CARD-containing protein was recently identified and designated CARD8. This protein interacts with DRAL, a p53-responsive protein implicated in the induction of apoptosis, and caspase-1 and its related proteins ICEBERG and pseudo-ICE. Although there are conflicting reports on whether CARD8 acts a pro- or anti-apoptotic protein, it has been suggested that it functions as an adaptor molecule regulating caspase-1 and NF- κ B activation.

Note: This product is for in vitro research use only