

ADORA2B Rabbit Polyclonal Antibody

Catalog No: #54626

Package Size: #54626-1 50ul #54626-2 100ul

Orders: order@signalwayantibody.comSupport: tech@signalwayantibody.com

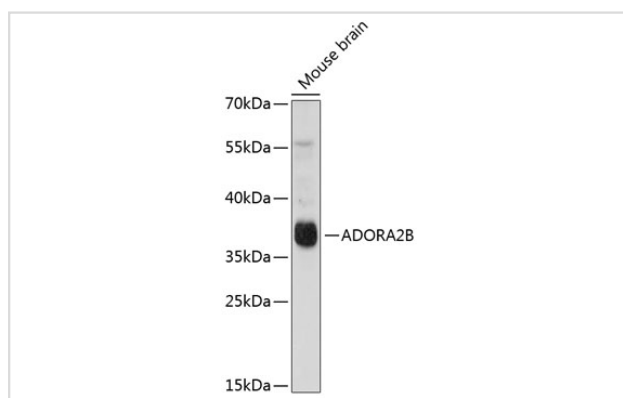
Description

Product Name	ADORA2B Rabbit Polyclonal Antibody
Host Species	Rabbit
Clonality	Polyclonal
Isotype	IgG
Purification	Affinity purification
Applications	WB,IF
Species Reactivity	Mouse,Rat
Immunogen Description	A synthetic peptide of human ADORA2B (NP_000667.1).
Other Names	ADORA2B;ADORA2
Accession No.	Swiss Prot:P29275GenelD:136
Uniprot	P29275
Calculated MW	36kDa
SDS-PAGE MW	36kDa
Formulation	Buffer: PBS with 0.02% sodium azide,50% glycerol,pH7.3.
Storage	Store at -20°C. Avoid freeze / thaw cycles.

Application Details

WB□1:500 - 1:2000IF□1:50 - 1:200

Images



Western blot analysis of extracts of mouse brain, using ADORA2B at 1:1000 dilution.

Background

This gene encodes an adenosine receptor that is a member of the G protein-coupled receptor superfamily. This integral membrane protein stimulates adenylate cyclase activity in the presence of adenosine. This protein also interacts with netrin-1, which is involved in axon elongation. The gene is located near the Smith-Magenis syndrome region on chromosome 17.

Note: This product is for in vitro research use only