

CHIT1 Rabbit Polyclonal Antibody

Catalog No: #54638

Package Size: #54638-1 50ul #54638-2 100ul

Orders: order@signalwayantibody.comSupport: tech@signalwayantibody.com

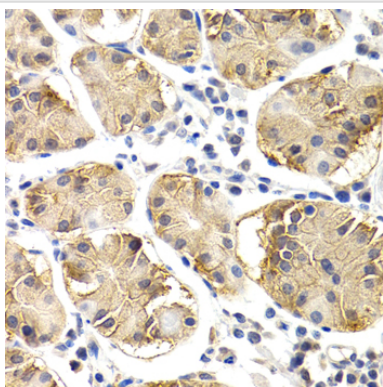
Description

Product Name	CHIT1 Rabbit Polyclonal Antibody
Host Species	Rabbit
Clonality	Polyclonal
Isotype	IgG
Purification	Affinity purification
Applications	WB,IHC
Species Reactivity	Human,Mouse
Immunogen Description	Recombinant fusion protein of human CHIT1 (NP_003456.1).
Other Names	CHIT1;CHI3;CHIT;CHITD
Accession No.	Swiss Prot:Q13231GeneID:1118
Uniprot	Q13231
Calculated MW	43kDa/48kDa/49kDa/51kDa
SDS-PAGE MW	52kDa
Formulation	Buffer: PBS with 0.02% sodium azide,50% glycerol,pH7.3.
Storage	Store at -20°C. Avoid freeze / thaw cycles.

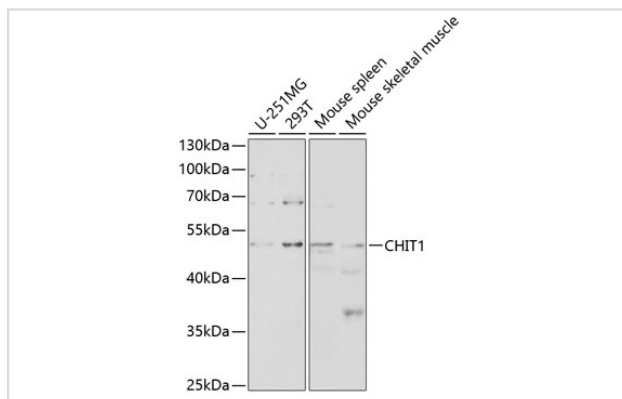
Application Details

WB□1:500 - 1:2000IHC□1:50 - 1:200

Images



Immunohistochemistry of paraffin-embedded human normal stomach using CHIT1 at dilution of 1:200 (40x lens).



Western blot analysis of extracts of various cell lines, using CHIT1 at 1:1000 dilution.

Background

Chitotriosidase is secreted by activated human macrophages and is markedly elevated in plasma of Gaucher disease patients. The expression of chitotriosidase occurs only at a late stage of differentiation of monocytes to activated macrophages in culture. Human macrophages can synthesize a functional chitotriosidase, a highly conserved enzyme with a strongly regulated expression. This enzyme may play a role in the degradation of chitin-containing pathogens. Several alternatively spliced transcript variants have been described for this gene.

Note: This product is for in vitro research use only