

TRIM28 Rabbit Polyclonal Antibody

Catalog No: #54672



Package Size: #54672-1 50ul #54672-2 100ul

Orders: order@signalwayantibody.com
Support: tech@signalwayantibody.com

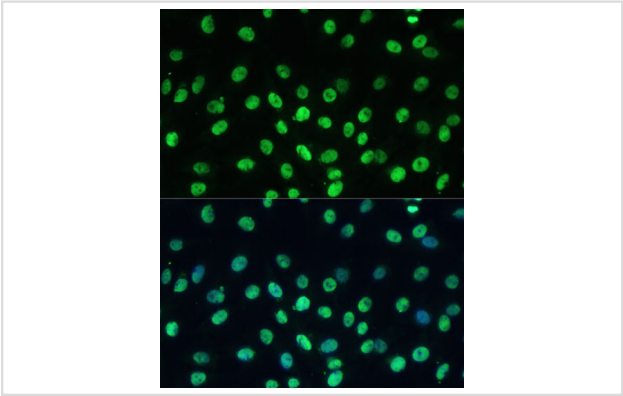
Description

| | |
|-----------------------|---|
| Product Name | TRIM28 Rabbit Polyclonal Antibody |
| Host Species | Rabbit |
| Clonality | Polyclonal |
| Isotype | IgG |
| Purification | Affinity purification |
| Applications | WB,IHC,IF |
| Species Reactivity | Human,Mouse,Rat |
| Immunogen Description | Recombinant fusion protein of human TRIM28 (NP_005753.1). |
| Other Names | KAP1;PPP1R157;RNF96;TF1B;TIF1B;TRIM28 |
| Accession No. | Swiss Prot:Q13263GeneID:10155 |
| Uniprot | Q13263 |
| Calculated MW | 79kDa/88kDa |
| SDS-PAGE MW | 120kDa |
| Formulation | Buffer: PBS with 0.02% sodium azide,50% glycerol,pH7.3. |
| Storage | Store at -20°C. Avoid freeze / thaw cycles. |

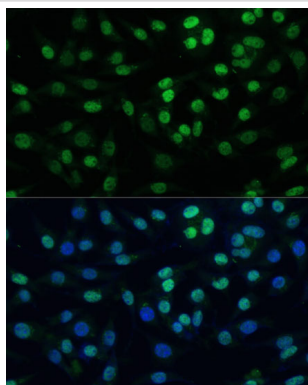
Application Details

WB 1:1000 - 1:3000IHC 1:100 - 1:200IF 1:50 - 1:200

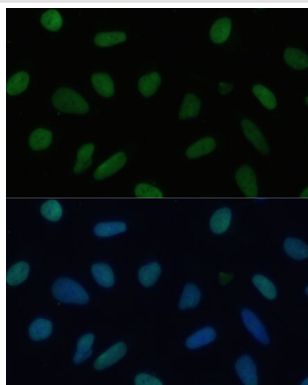
Images



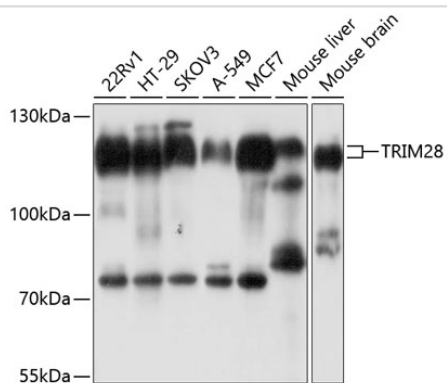
Immunofluorescence analysis of C6 cells using TRIM28 Polyclonal at dilution of 1:100 (40x lens). Blue: DAPI for nuclear staining.



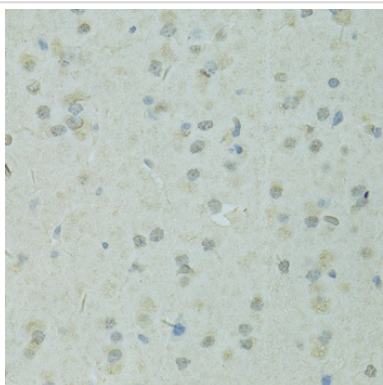
Immunofluorescence analysis of L929 cells using TRIM28 Polyclonal at dilution of 1:100 (40x lens). Blue: DAPI for nuclear staining.



Immunofluorescence analysis of U-2 OS cells using TRIM28 Polyclonal at dilution of 1:100 (40x lens). Blue: DAPI for nuclear staining.



Western blot analysis of extracts of various cell lines, using TRIM28 at 1:1000 dilution.



Immunohistochemistry of paraffin-embedded rat brain using TRIM28 at dilution of 1:100 (40x lens).

Background

The protein encoded by this gene mediates transcriptional control by interaction with the Kruppel-associated box repression domain found in many transcription factors. The protein localizes to the nucleus and is thought to associate with specific chromatin regions. The protein is a member of the tripartite motif family. This tripartite motif includes three zinc-binding domains, a RING, a B-box type 1 and a B-box type 2, and a coiled-coil region.

Note: This product is for in vitro research use only