

SOX9 Rabbit Polyclonal Antibody

Catalog No: #54687



Package Size: #54687-1 50ul #54687-2 100ul

Orders: order@signalwayantibody.com
Support: tech@signalwayantibody.com

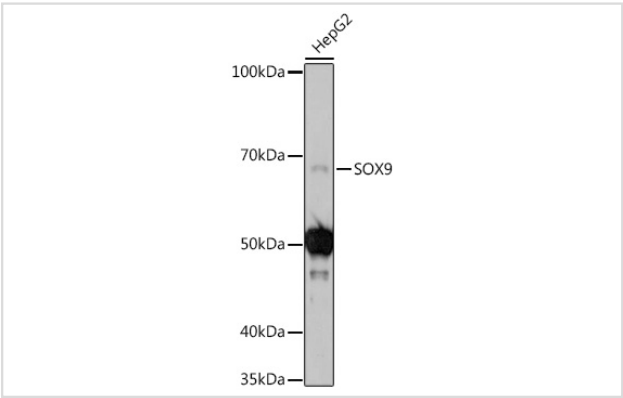
Description

Product Name	SOX9 Rabbit Polyclonal Antibody
Host Species	Rabbit
Clonality	Polyclonal
Isotype	IgG
Purification	Affinity purification
Applications	WB,IHC
Species Reactivity	Human,Mouse,Rat
Immunogen Description	A synthetic peptide of human SOX9 (NP_000337.1).
Other Names	CMD1;CMPD1;SRA1;SRXX2;SRXY10;SOX9;SRY-box 9
Accession No.	Swiss Prot:P48436GenelD:6662
Uniprot	P48436
Calculated MW	56kDa
SDS-PAGE MW	70kDa
Formulation	Buffer: PBS with 0.02% sodium azide,50% glycerol,pH7.3.
Storage	Store at -20°C. Avoid freeze / thaw cycles.

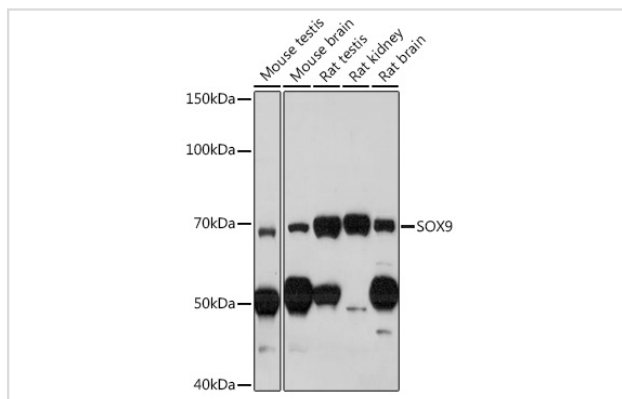
Application Details

WB□1:2000 - 1:5000IHC□1:50 - 1:200

Images



Western blot analysis of extracts of HepG2 cells, using SOX9 at 1:1000 dilution.



Western blot analysis of extracts of various cell lines, using SOX9 at 1:1000 dilution.

Background

The protein encoded by this gene recognizes the sequence CCTTGAG along with other members of the HMG-box class DNA-binding proteins. It acts during chondrocyte differentiation and, with steroidogenic factor 1, regulates transcription of the anti-Muellerian hormone (AMH) gene. Deficiencies lead to the skeletal malformation syndrome campomelic dysplasia, frequently with sex reversal.

Note: This product is for in vitro research use only