

MAT1A Rabbit Polyclonal Antibody

Catalog No: #54696



Package Size: #54696-1 50ul #54696-2 100ul

Orders: order@signalwayantibody.com
Support: tech@signalwayantibody.com

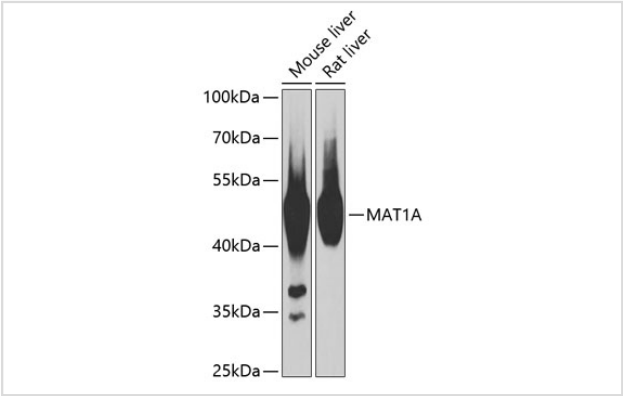
Description

Product Name	MAT1A Rabbit Polyclonal Antibody
Host Species	Rabbit
Clonality	Polyclonal
Isotype	IgG
Purification	Affinity purification
Applications	WB
Species Reactivity	Human,Mouse,Rat
Immunogen Description	Recombinant fusion protein of human MAT1A (NP_000420.1).
Other Names	MAT1A;MAT;MATA1;SAMS;SAMS1
Accession No.	Uniprot:Q00266GeneID:4143
Uniprot	Q00266
GeneID	4143
Calculated MW	43kDa
SDS-PAGE MW	44kDa
Formulation	PBS with 0.02% sodium azide,50% glycerol,pH7.3.
Storage	Store at -20°C. Avoid freeze / thaw cycles.

Application Details

WB 1:500 - 1:2000

Images



Western blot analysis of extracts of various cell lines, using MAT1A antibody.

Background

This gene catalyzes a two-step reaction that involves the transfer of the adenosyl moiety of ATP to methionine to form S-adenosylmethionine and triphosphosphate, which is subsequently cleaved to PPi and Pi. S-adenosylmethionine is the source of methyl groups for most biological methylations. The encoded protein is found as a homotetramer (MAT I) or a homodimer (MAT III) whereas a third form, MAT II (gamma), is encoded by the MAT2A

gene. Mutations in this gene are associated with methionine adenosyltransferase deficiency.

Note: This product is for in vitro research use only