

CDC37 Rabbit Polyclonal Antibody

Catalog No: #54724



Package Size: #54724-1 50ul #54724-2 100ul

Orders: order@signalwayantibody.com
Support: tech@signalwayantibody.com

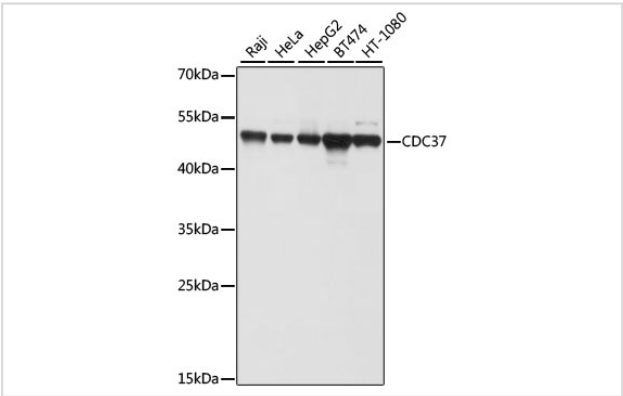
Description

Product Name	CDC37 Rabbit Polyclonal Antibody
Host Species	Rabbit
Clonality	Polyclonal
Isotype	IgG
Purification	Affinity purification
Applications	WB,IHC
Species Reactivity	Human,Mouse
Immunogen Description	Recombinant fusion protein of human CDC37 (NP_008996.1).
Other Names	CDC37;P50CDC37
Accession No.	Swiss Prot:Q16543GeneID:11140
Uniprot	Q16543
Calculated MW	44kDa
SDS-PAGE MW	50kDa
Formulation	Buffer: PBS with 0.02% sodium azide,50% glycerol,pH7.3.
Storage	Store at -20°C. Avoid freeze / thaw cycles.

Application Details

WB 1:200 - 1:1000IHC 1:50 - 1:200IP 1:50 - 1:200

Images



Western blot analysis of extracts of various cell lines, using CDC37 at 1:1000 dilution.

Background

The protein encoded by this gene is highly similar to Cdc 37, a cell division cycle control protein of *Sacchromyces cerevisiae*. This protein is a molecular chaperone with specific function in cell signal transduction. It has been shown to form complex with Hsp90 and a variety of protein kinases including CDK4, CDK6, SRC, RAF-1, MOK, as well as eIF2 alpha kinases. It is thought to play a critical role in directing Hsp90 to its target kinases.

Note: This product is for in vitro research use only