

# CSNK2B Rabbit Polyclonal Antibody

Catalog No: #54726



Package Size: #54726-1 50ul #54726-2 100ul

Orders: [order@signalwayantibody.com](mailto:order@signalwayantibody.com)  
Support: [tech@signalwayantibody.com](mailto:tech@signalwayantibody.com)

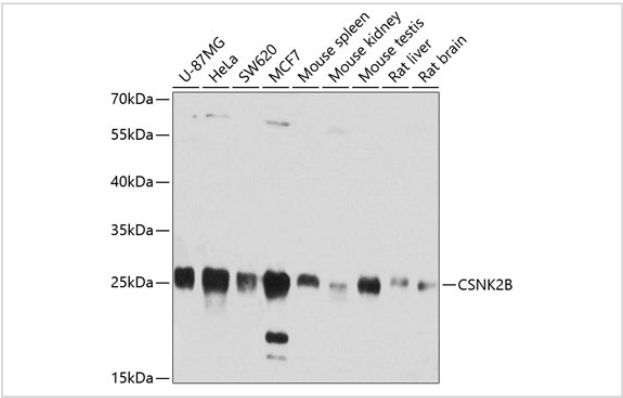
## Description

Product Name	CSNK2B Rabbit Polyclonal Antibody
Host Species	Rabbit
Clonality	Polyclonal
Isotype	IgG
Purification	Affinity purification
Applications	WB,IHC
Species Reactivity	Human,Mouse,Rat
Immunogen Description	Recombinant fusion protein of human CSNK2B (NP_001311.3).
Other Names	CK2B;CK2N;CSK2B;G5A;CSNK2B;Ckb1;Ckb2
Accession No.	Swiss Prot:P67870GenelD:1460
Uniprot	P67870
Calculated MW	24kDa
SDS-PAGE MW	25kDa
Formulation	Buffer: PBS with 0.02% sodium azide,50% glycerol,pH7.3.
Storage	Store at -20°C. Avoid freeze / thaw cycles.

## Application Details

WB 1:500 - 1:2000IHC 1:50 - 1:200

## Images



Western blot analysis of extracts of various cell lines, using CSNK2B at 1:1000 dilution.

## Background

This gene encodes the beta subunit of casein kinase II, a ubiquitous protein kinase which regulates metabolic pathways, signal transduction, transcription, translation, and replication. The enzyme is composed of three subunits, alpha, alpha prime and beta, which form a tetrameric holoenzyme. The alpha and alpha prime subunits are catalytic, while the beta subunit serves regulatory functions. The enzyme localizes to the endoplasmic reticulum and the Golgi apparatus. Two transcript variants encoding different isoforms have been found for this gene.

---

Note: This product is for in vitro research use only