

Cyclin A2 Rabbit Polyclonal Antibody

Catalog No: #54728



Package Size: #54728-1 50ul #54728-2 100ul

Orders: order@signalwayantibody.com
Support: tech@signalwayantibody.com

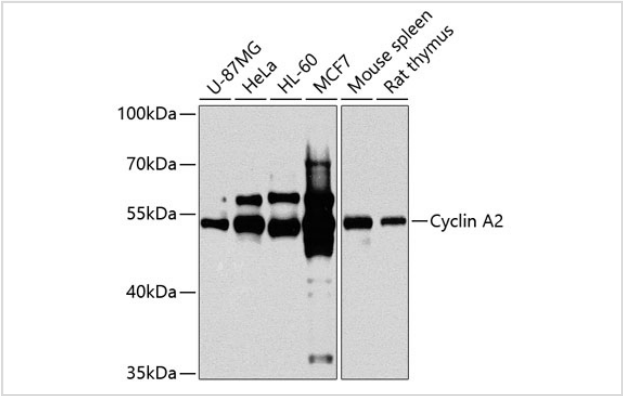
Description

| | |
|-----------------------|--|
| Product Name | Cyclin A2 Rabbit Polyclonal Antibody |
| Host Species | Rabbit |
| Clonality | Polyclonal |
| Isotype | IgG |
| Purification | Affinity purification |
| Applications | WB,IF |
| Species Reactivity | Human,Mouse,Rat |
| Immunogen Description | Recombinant fusion protein of human Cyclin A2 (NP_001228.1). |
| Other Names | CCN1;CCNA;Cyclin A2;CCNA2;cyclin-A2 |
| Accession No. | Uniprot:P20248GenelD:890 |
| Uniprot | P20248 |
| GenelD | 890 |
| Calculated MW | 48kDa |
| SDS-PAGE MW | 55kDa |
| Formulation | PBS with 0.02% sodium azide,50% glycerol,pH7.3. |
| Storage | Store at -20°C. Avoid freeze / thaw cycles. |

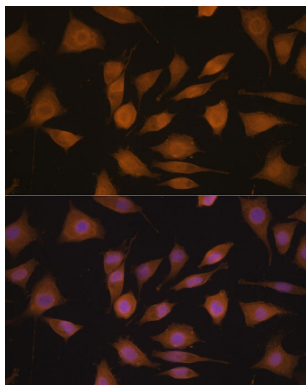
Application Details

WB 1:500 - 1:2000IF 1:50 - 1:200

Images



Western blot analysis of extracts of various cell lines, using Cyclin A2 antibody.



Immunofluorescence analysis of L929 cells using Cyclin A2 antibody.

Background

The protein encoded by this gene belongs to the highly conserved cyclin family, whose members are characterized by a dramatic periodicity in protein abundance through the cell cycle. Cyclins function as regulators of CDK kinases. Different cyclins exhibit distinct expression and degradation patterns which contribute to the temporal coordination of each mitotic event. In contrast to cyclin A1, which is present only in germ cells, this cyclin is expressed in all tissues tested. This cyclin binds and activates CDC2 or CDK2 kinases, and thus promotes both cell cycle G1/S and G2/M transitions.

Note: This product is for in vitro research use only