

SLC1A1 Rabbit Polyclonal Antibody

Catalog No: #54729



Package Size: #54729-1 50ul #54729-2 100ul

Orders: order@signalwayantibody.com
Support: tech@signalwayantibody.com

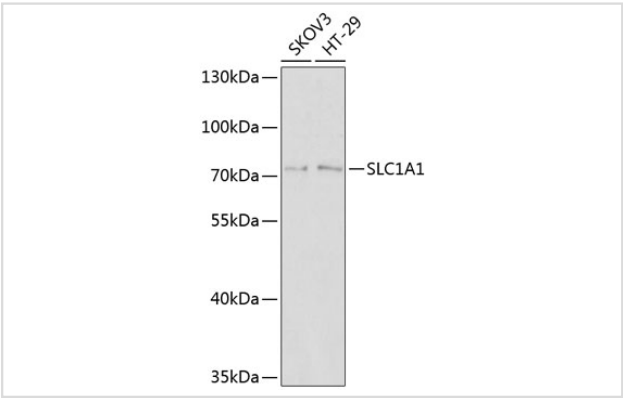
Description

Product Name	SLC1A1 Rabbit Polyclonal Antibody
Host Species	Rabbit
Clonality	Polyclonal
Isotype	IgG
Purification	Affinity purification
Applications	WB,IF
Species Reactivity	Human,Mouse,Rat
Immunogen Description	Recombinant fusion protein of human SLC1A1 (NP_004161.4).
Other Names	SLC1A1;DCBXA;EAAC1;EAAT3;SCZD18
Accession No.	Swiss Prot:P43005GenelD:6505
Uniprot	P43005
Calculated MW	57kDa
SDS-PAGE MW	71kDa
Formulation	Buffer: PBS with 0.02% sodium azide,50% glycerol,pH7.3.
Storage	Store at -20°C. Avoid freeze / thaw cycles.

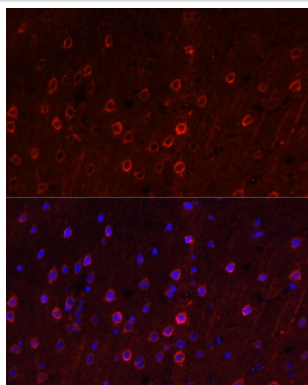
Application Details

WB 1:500 - 1:2000IF 1:50 - 1:200

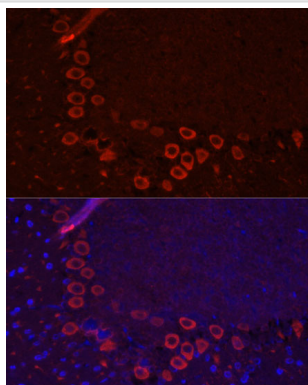
Images



Western blot analysis of extracts of various cell lines, using SLC1A1 at 1:1000 dilution.



Immunofluorescence analysis of rat brain using SLC1A1 at dilution of 1:100. Blue: DAPI for nuclear staining.



Immunofluorescence analysis of mouse brain using SLC1A1 at dilution of 1:100. Blue: DAPI for nuclear staining.

Background

This gene encodes a member of the high-affinity glutamate transporters that play an essential role in transporting glutamate across plasma membranes. In brain, these transporters are crucial in terminating the postsynaptic action of the neurotransmitter glutamate, and in maintaining extracellular glutamate concentrations below neurotoxic levels. This transporter also transports aspartate, and mutations in this gene are thought to cause dicarboxylic amino aciduria, also known as glutamate-aspartate transport defect.

Note: This product is for in vitro research use only