

MAP1B Rabbit Polyclonal Antibody

Catalog No: #54755



Package Size: #54755-1 50ul #54755-2 100ul

Orders: order@signalwayantibody.com
Support: tech@signalwayantibody.com

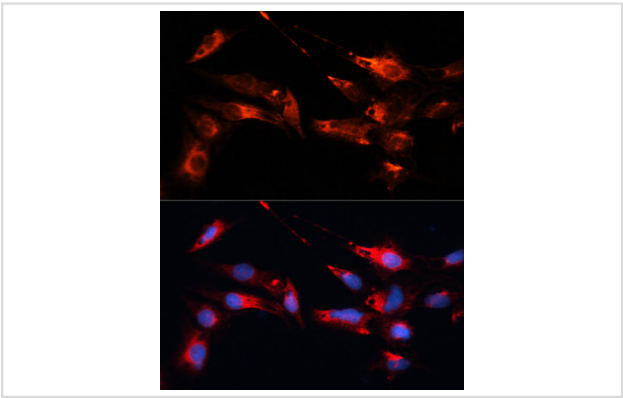
Description

Product Name	MAP1B Rabbit Polyclonal Antibody
Host Species	Rabbit
Clonality	Polyclonal
Isotype	IgG
Purification	Affinity purification
Applications	WB,IHC,IF
Species Reactivity	Human,Mouse,Rat
Immunogen Description	Recombinant fusion protein of human MAP1B (NP_005900.2).
Other Names	MAP1B;FUTSCH;MAP5;PPP1R102
Accession No.	Swiss Prot:P46821GenelD:4131
Uniprot	P46821
Calculated MW	270kDa
SDS-PAGE MW	350kDa
Formulation	Buffer: PBS with 0.02% sodium azide,50% glycerol,pH7.3.
Storage	Store at -20°C. Avoid freeze / thaw cycles.

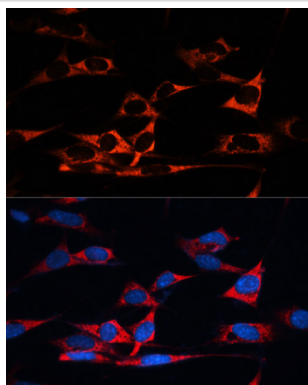
Application Details

WB 1:200 - 1:2000IHC 1:50 - 1:200IF 1:50 - 1:200

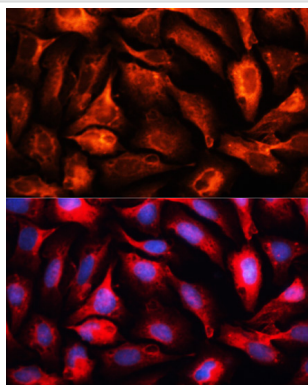
Images



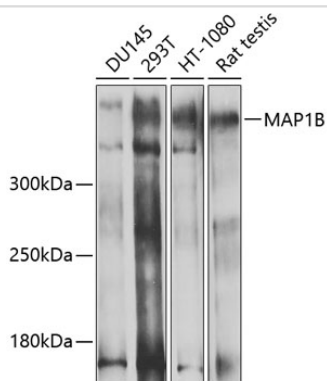
Immunofluorescence analysis of C6 cells using MAP1B at dilution of 1:100. Blue: DAPI for nuclear staining.



Immunofluorescence analysis of NIH/3T3 cells using MAP1B at dilution of 1:100. Blue: DAPI for nuclear staining.



Immunofluorescence analysis of U2OS cells using MAP1B at dilution of 1:100. Blue: DAPI for nuclear staining.



Western blot analysis of extracts of various cell lines, using MAP1B at 1:1000 dilution.

Background

This gene encodes a protein that belongs to the microtubule-associated protein family. The proteins of this family are thought to be involved in microtubule assembly, which is an essential step in neurogenesis. The product of this gene is a precursor polypeptide that presumably undergoes proteolytic processing to generate the final MAP1B heavy chain and LC1 light chain. Gene knockout studies of the mouse microtubule-associated protein 1B gene suggested an important role in development and function of the nervous system.

Note: This product is for in vitro research use only