

SLC39A7 Rabbit Polyclonal Antibody

Catalog No: #54760



Package Size: #54760-1 50ul #54760-2 100ul

Orders: order@signalwayantibody.com
Support: tech@signalwayantibody.com

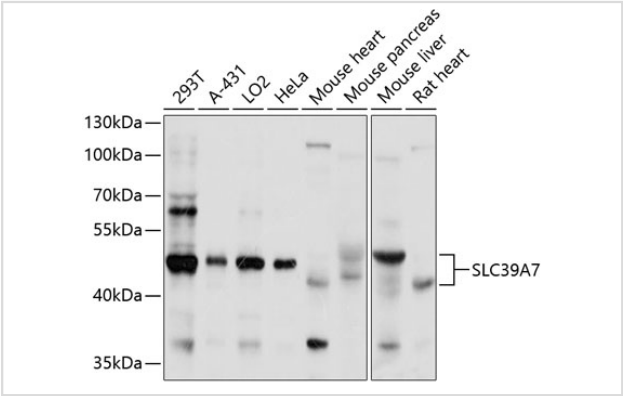
Description

Product Name	SLC39A7 Rabbit Polyclonal Antibody
Host Species	Rabbit
Clonality	Polyclonal
Isotype	IgG
Purification	Affinity purification
Applications	WB
Species Reactivity	Human,Mouse,Rat
Immunogen Description	Recombinant fusion protein of human SLC39A7 (NP_008910.2).
Other Names	SLC39A7;D6S115E;D6S2244E;H2-KE4;HKE4;KE4;RING5;ZIP7
Accession No.	Uniprot:Q92504GeneID:7922
Uniprot	Q92504
GeneID	7922
Calculated MW	50kDa
SDS-PAGE MW	50kDa
Formulation	PBS with 0.02% sodium azide,50% glycerol,pH7.3.
Storage	Store at -20°C. Avoid freeze / thaw cycles.

Application Details

WB 1:1000 - 1:3000

Images



Western blot analysis of extracts of various cell lines, using SLC39A7 antibody.

Background

The protein encoded by this gene transports zinc from the Golgi and endoplasmic reticulum to the cytoplasm. This transport may be important for activation of tyrosine kinases, some of which could be involved in cancer progression. Therefore, modulation of the encoded protein could be useful as a therapeutic agent against cancer. Alternative splicing results in multiple transcript variants.

Note: This product is for in vitro research use only