

DOCK2 Rabbit Polyclonal Antibody

Catalog No: #54776



Package Size: #54776-1 50ul #54776-2 100ul

Orders: order@signalwayantibody.com
Support: tech@signalwayantibody.com

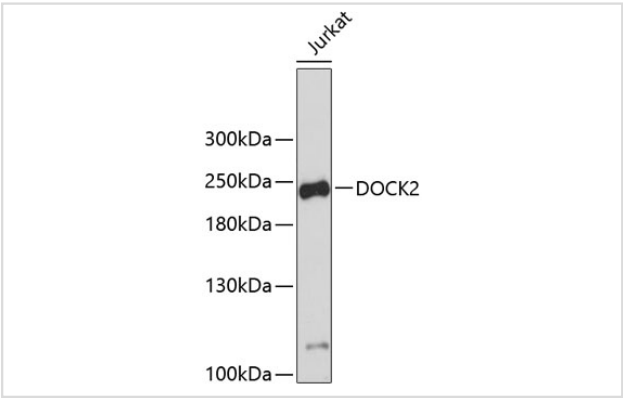
Description

| | |
|-----------------------|--|
| Product Name | DOCK2 Rabbit Polyclonal Antibody |
| Host Species | Rabbit |
| Clonality | Polyclonal |
| Isotype | IgG |
| Purification | Affinity purification |
| Applications | WB,IF |
| Species Reactivity | Human,Mouse |
| Immunogen Description | Recombinant fusion protein of human DOCK2 (NP_004937.1). |
| Other Names | DOCK2;IMD40 |
| Accession No. | Swiss Prot:Q92608GeneID:1794 |
| Uniprot | Q92608 |
| Calculated MW | 38kDa/211kDa |
| SDS-PAGE MW | 240kDa |
| Formulation | Buffer: PBS with 0.02% sodium azide,50% glycerol,pH7.3. |
| Storage | Store at -20°C. Avoid freeze / thaw cycles. |

Application Details

WB 1:500 - 1:2000IF 1:50 - 1:200

Images



Western blot analysis of extracts of Jurkat cells, using DOCK2

Background

The protein encoded by this gene belongs to the CDM protein family. It is specifically expressed in hematopoietic cells and is predominantly expressed in peripheral blood leukocytes. The protein is involved in remodeling of the actin cytoskeleton required for lymphocyte migration in response to chemokine signaling. It activates members of the Rho family of GTPases, for example RAC1 and RAC2, by acting as a guanine nucleotide exchange factor (GEF) to exchange bound GDP for free GTP.

Note: This product is for in vitro research use only