

ALDH1B1 Rabbit Polyclonal Antibody

Catalog No: #54782



Package Size: #54782-1 50ul #54782-2 100ul

Orders: order@signalwayantibody.com
Support: tech@signalwayantibody.com

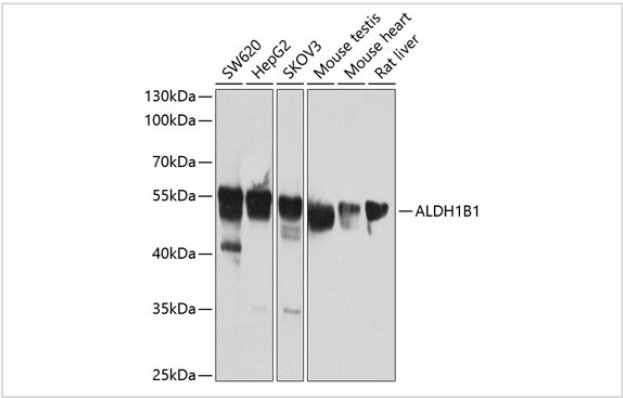
Description

| | |
|-----------------------|--|
| Product Name | ALDH1B1 Rabbit Polyclonal Antibody |
| Host Species | Rabbit |
| Clonality | Polyclonal |
| Isotype | IgG |
| Purification | Affinity purification |
| Applications | WB,IF |
| Species Reactivity | Human,Mouse,Rat |
| Immunogen Description | Recombinant fusion protein of human ALDH1B1 (NP_000683.3). |
| Other Names | ALDH1B1;ALDH5;ALDHX |
| Accession No. | Swiss Prot:P30837GenelD:219 |
| Uniprot | P30837 |
| Calculated MW | 57kDa |
| SDS-PAGE MW | 57kDa |
| Formulation | Buffer: PBS with 0.02% sodium azide,50% glycerol,pH7.3. |
| Storage | Store at -20°C. Avoid freeze / thaw cycles. |

Application Details

WB 1:500 - 1:2000IF 1:50 - 1:200

Images



Western blot analysis of extracts of various cell lines, using ALDH1B1 at 1:1000 dilution.

Background

This protein belongs to the aldehyde dehydrogenases family of proteins. Aldehyde dehydrogenase is the second enzyme of the major oxidative pathway of alcohol metabolism. This gene does not contain introns in the coding sequence. The variation of this locus may affect the development of alcohol-related problems.

Note: This product is for in vitro research use only