

# IL3RA Rabbit Polyclonal Antibody

Catalog No: #54809



Package Size: #54809-1 50ul #54809-2 100ul

Orders: [order@signalwayantibody.com](mailto:order@signalwayantibody.com)  
Support: [tech@signalwayantibody.com](mailto:tech@signalwayantibody.com)

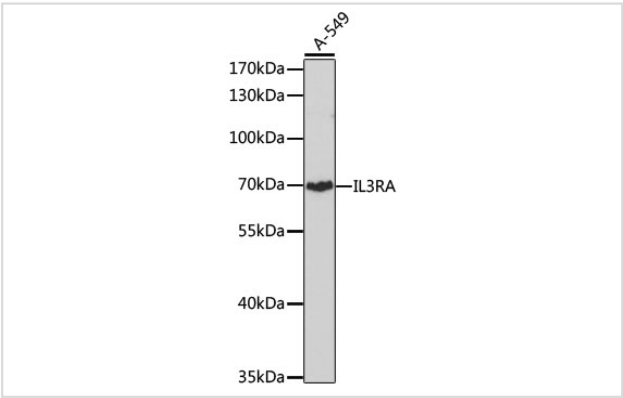
## Description

Product Name	IL3RA Rabbit Polyclonal Antibody
Host Species	Rabbit
Clonality	Polyclonal
Isotype	IgG
Purification	Affinity purification
Applications	WB,IHC
Species Reactivity	Human,Mouse,Rat
Immunogen Description	A synthetic peptide of human IL3RA (NP_002174.1).
Other Names	IL3RA;CD123;IL3R;IL3RAY;IL3RX;IL3RY;hIL-3Ra
Accession No.	Swiss Prot:P26951GenelD:3563
Uniprot	P26951
Calculated MW	34kDa/43kDa
SDS-PAGE MW	70kDa
Formulation	Buffer: PBS with 0.02% sodium azide,50% glycerol,pH7.3.
Storage	Store at -20°C. Avoid freeze / thaw cycles.

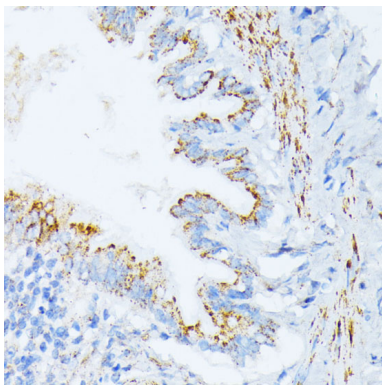
## Application Details

WB 1:500 - 1:2000IHC 1:100 - 1:200

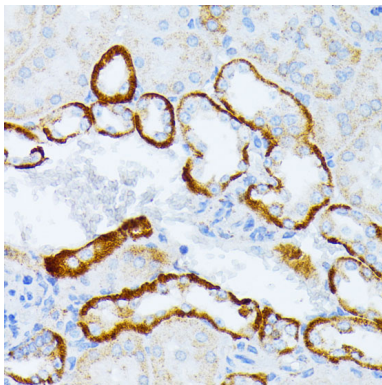
## Images



Western blot analysis of extracts of A-549 cells, using IL3RA at 1:1000 dilution.



Immunohistochemistry of paraffin-embedded rat lung using IL3RA at dilution of 1:100 (40x lens).



Immunohistochemistry of paraffin-embedded mouse kidney using IL3RA at dilution of 1:100 (40x lens).

## Background

The protein encoded by this gene is an interleukin 3 specific subunit of a heterodimeric cytokine receptor. The receptor is comprised of a ligand specific alpha subunit and a signal transducing beta subunit shared by the receptors for interleukin 3 (IL3), colony stimulating factor 2 (CSF2/GM-CSF), and interleukin 5 (IL5). The binding of this protein to IL3 depends on the beta subunit. The beta subunit is activated by the ligand binding, and is required for the biological activities of IL3. This gene and the gene encoding the colony stimulating factor 2 receptor alpha chain (CSF2RA) form a cytokine receptor gene cluster in a X-Y pseudoautosomal region on chromosomes X or Y. Alternatively spliced transcript variants encoding distinct isoforms have been found.

Note: This product is for in vitro research use only