

INPP5B Rabbit Polyclonal Antibody

Catalog No: #54810

Package Size: #54810-1 50ul #54810-2 100ul

Orders: order@signalwayantibody.comSupport: tech@signalwayantibody.com

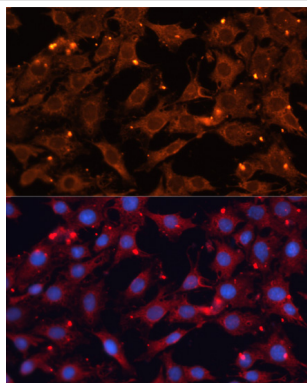
Description

Product Name	INPP5B Rabbit Polyclonal Antibody
Host Species	Rabbit
Clonality	Polyclonal
Isotype	IgG
Purification	Affinity purification
Applications	WB,IF
Species Reactivity	Human,Mouse,Rat
Immunogen Description	Recombinant fusion protein of human INPP5B (NP_005531.2).
Other Names	INPP5B;5PTase
Accession No.	Swiss Prot:P32019GenelD:3633
Uniprot	P32019
Calculated MW	85kDa/93kDa/103kDa/112kDa
SDS-PAGE MW	113kDa
Formulation	Buffer: PBS with 0.02% sodium azide,50% glycerol,pH7.3.
Storage	Store at -20°C. Avoid freeze / thaw cycles.

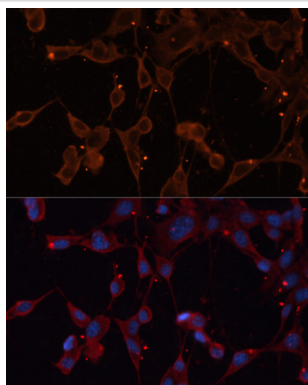
Application Details

WB□1:500 - 1:2000IF□1:50 - 1:200

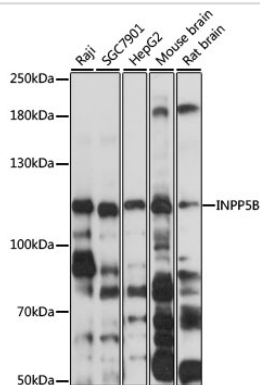
Images



Immunofluorescence analysis of C6 cells using INPP5B at dilution of 1:100. Blue: DAPI for nuclear staining.



Immunofluorescence analysis of NIH/3T3 cells using INPP5B at dilution of 1:100. Blue: DAPI for nuclear staining.



Western blot analysis of extracts of various cell lines, using INPP5B at 1:3000 dilution.

Background

This gene encodes a member of a family of inositol polyphosphate-5-phosphatases. These enzymes function in the regulation of calcium signaling by inactivating inositol phosphates. The encoded protein is localized to the cytosol and mitochondria, and associates with membranes through an isoprenyl modification near the C-terminus. Alternatively spliced transcript variants of this gene have been described.

Note: This product is for in vitro research use only