

CCNE2 Rabbit Polyclonal Antibody

Catalog No: #54843

Package Size: #54843-1 50ul #54843-2 100ul

Orders: order@signalwayantibody.comSupport: tech@signalwayantibody.com

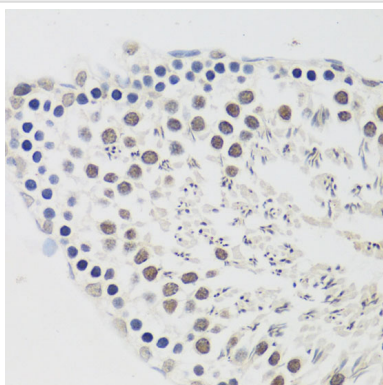
Description

Product Name	CCNE2 Rabbit Polyclonal Antibody
Host Species	Rabbit
Clonality	Polyclonal
Isotype	IgG
Purification	Affinity purification
Applications	WB,IHC
Species Reactivity	Human,Mouse,Rat
Immunogen Description	A synthetic peptide of human CCNE2 (NP_477097.1).
Other Names	CCNE2;CYCE2;cyclin E2
Accession No.	Swiss Prot:O96020GeneID:9134
Uniprot	O96020
Calculated MW	41kDa/46kDa
SDS-PAGE MW	47kDa
Formulation	Buffer: PBS with 0.02% sodium azide,50% glycerol,pH7.3.
Storage	Store at -20°C. Avoid freeze / thaw cycles.

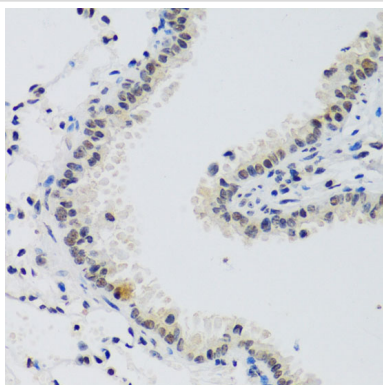
Application Details

WB□1:500 - 1:2000IHC□1:50 - 1:100

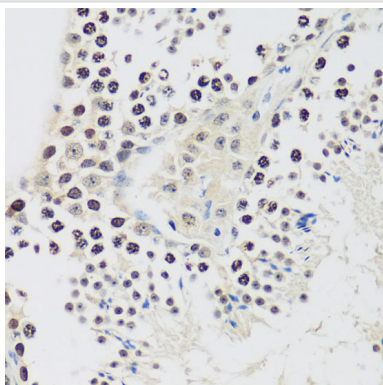
Images



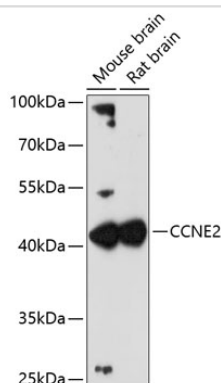
Immunohistochemistry of paraffin-embedded rat testis using CCNE2 at dilution of 1:100 (40x lens).



Immunohistochemistry of paraffin-embedded mouse lung using CCNE2 at dilution of 1:100 (40x lens).



Immunohistochemistry of paraffin-embedded mouse testis using CCNE2 at dilution of 1:100 (40x lens).



Western blot analysis of extracts of various cell lines, using CCNE2 at 1:3000 dilution.

Background

The protein encoded by this gene belongs to the highly conserved cyclin family, whose members are characterized by a dramatic periodicity in protein abundance through the cell cycle. Cyclins function as regulators of CDK kinases. Different cyclins exhibit distinct expression and degradation patterns which contribute to the temporal coordination of each mitotic event. This cyclin forms a complex with and functions as a regulatory subunit of CDK2. This cyclin has been shown to specifically interact with CIP/KIP family of CDK inhibitors, and plays a role in cell cycle G1/S transition. The expression of this gene peaks at the G1-S phase and exhibits a pattern of tissue specificity distinct from that of cyclin E1. A significantly increased expression level of this gene was observed in tumor-derived cells.

Note: This product is for in vitro research use only