

FXR2 Rabbit Polyclonal Antibody

Catalog No: #54847

Package Size: #54847-1 50ul #54847-2 100ul

Orders: order@signalwayantibody.comSupport: tech@signalwayantibody.com

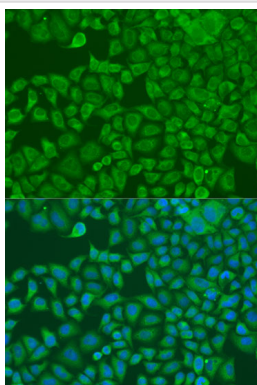
Description

Product Name	FXR2 Rabbit Polyclonal Antibody
Host Species	Rabbit
Clonality	Polyclonal
Isotype	IgG
Purification	Affinity purification
Applications	WB,IF
Species Reactivity	Human,Mouse
Immunogen Description	A synthetic peptide of human FXR2 (NP_004851.2).
Other Names	FXR2;FMR1L2;FXR2P
Accession No.	Swiss Prot:P51116GenelD:9513
Uniprot	P51116
Calculated MW	74kDa
SDS-PAGE MW	104kDa
Formulation	Buffer: PBS with 0.02% sodium azide,50% glycerol,pH7.3.
Storage	Store at -20°C. Avoid freeze / thaw cycles.

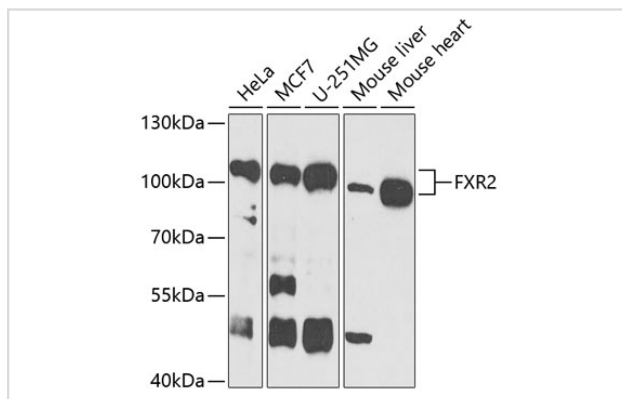
Application Details

WB□1:500 - 1:2000IF□1:50 - 1:200

Images



Immunofluorescence analysis of U2OS cells using FXR2 at dilution of 1:100. Blue: DAPI for nuclear staining.



Western blot analysis of extracts of various cell lines, using FXR2 at 1:1000 dilution.

Background

The protein encoded by this gene is a RNA binding protein containing two KH domains and one RCG box, which is similar to FMRP and FXR1. It associates with polyribosomes, predominantly with 60S large ribosomal subunits. This encoded protein may self-associate or interact with FMRP and FXR1. It may have a role in the development of fragile X mental retardation syndrome.

Note: This product is for in vitro research use only