

# ABCG1 Rabbit Polyclonal Antibody

Catalog No: #54848



Package Size: #54848-1 50ul #54848-2 100ul

Orders: [order@signalwayantibody.com](mailto:order@signalwayantibody.com)  
Support: [tech@signalwayantibody.com](mailto:tech@signalwayantibody.com)

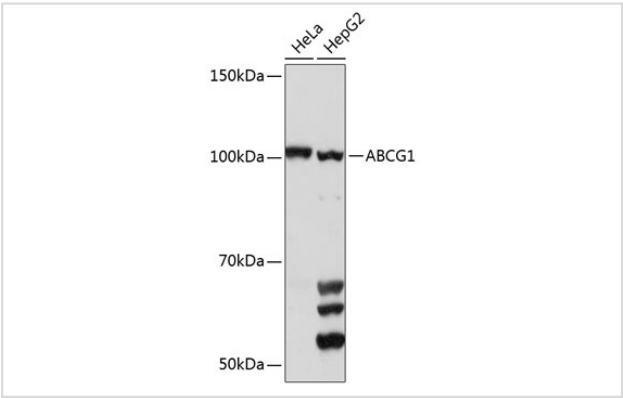
## Description

Product Name	ABCG1 Rabbit Polyclonal Antibody
Host Species	Rabbit
Clonality	Polyclonal
Isotype	IgG
Purification	Affinity purification
Applications	WB,IHC,IF
Species Reactivity	Human,Mouse,Rat
Immunogen Description	Recombinant fusion protein of human ABCG1 (NP_058198.2).
Other Names	ABC8;WHITE1;ABCG1
Accession No.	Swiss Prot:P45844GenelD:9619
Uniprot	P45844
Calculated MW	71kDa/73kDa/74kDa/75kDa/86kDa
SDS-PAGE MW	100KDa
Formulation	Buffer: PBS with 0.02% sodium azide,50% glycerol,pH7.3.
Storage	Store at -20°C. Avoid freeze / thaw cycles.

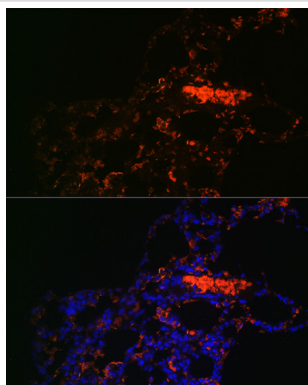
## Application Details

WB 1:500 - 1:2000IHC 1:50 - 1:200IF 1:50 - 1:200

## Images



Western blot analysis of extracts of various cell lines, using ABCG1 Polyclonal at 1:1000 dilution.



Immunofluorescence analysis of Rat lung using ABCG1 at dilution of 1:100. Blue: DAPI for nuclear staining.

## Background

The protein encoded by this gene is a member of the superfamily of ATP-binding cassette (ABC) transporters. ABC proteins transport various molecules across extra- and intra-cellular membranes. ABC genes are divided into seven distinct subfamilies (ABC1, MDR/TAP, MRP, ALD, OABP, GCN20, White). This protein is a member of the White subfamily. It is involved in macrophage cholesterol and phospholipids transport, and may regulate cellular lipid homeostasis in other cell types. Six alternative splice variants have been identified.

Note: This product is for in vitro research use only