

LYPLA1 Rabbit Polyclonal Antibody

Catalog No: #54854



Package Size: #54854-1 50ul #54854-2 100ul

Orders: order@signalwayantibody.com
Support: tech@signalwayantibody.com

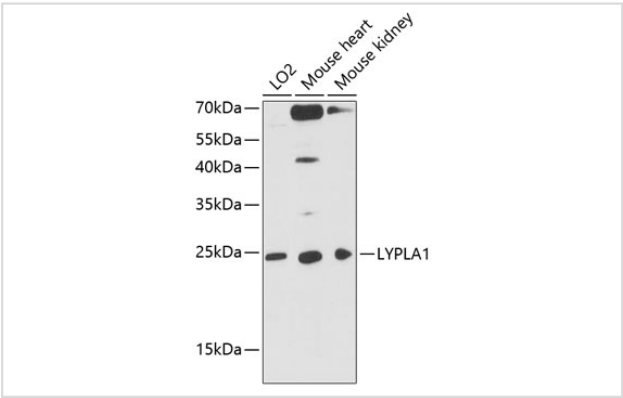
Description

Product Name	LYPLA1 Rabbit Polyclonal Antibody
Host Species	Rabbit
Clonality	Polyclonal
Isotype	IgG
Purification	Affinity purification
Applications	WB,IHC
Species Reactivity	Human,Mouse
Immunogen Description	Recombinant fusion protein of human LYPLA1 (NP_006321.1).
Other Names	LYPLA1;APT-1;APT1;LPL-I;LPL1;hAPT1
Accession No.	Swiss Prot:O75608GeneID:10434
Uniprot	O75608
Calculated MW	22kDa/24kDa
SDS-PAGE MW	25kDa
Formulation	Buffer: PBS with 0.02% sodium azide,50% glycerol,pH7.3.
Storage	Store at -20°C. Avoid freeze / thaw cycles.

Application Details

WB 1:2000 - 1:5000IHC 1:50 - 1:200

Images



Western blot analysis of extracts of various cell lines, using LYPLA1 at 1:3000 dilution.

Background

This gene encodes a member of the alpha/beta hydrolase superfamily. The encoded protein functions as a homodimer, exhibiting both depalmitoylating as well as lysophospholipase activity, and may be involved in Ras localization and signaling. Alternate splicing results in multiple transcript variants. Pseudogenes of this gene have been defined on chromosomes 4, 6, and 7.

Note: This product is for in vitro research use only